

RESEARCH

Open Access

S100A10 protein expression is associated with oxaliplatin sensitivity in human colorectal cancer cells

Sayo Suzuki¹, Yasuko Yamayoshi², Akito Nishimuta¹ and Yusuke Tanigawara^{1*}

Abstract

Background: Individual responses to oxaliplatin (L-OHP)-based chemotherapy remain unpredictable. The objective of our study was to find candidate protein markers for tumor sensitivity to L-OHP from intracellular proteins of human colorectal cancer (CRC) cell lines. We performed expression difference mapping (EDM) analysis of whole cell lysates from 11 human CRC cell lines with different sensitivities to L-OHP by using surface-enhanced laser desorption/ionization time-of-flight mass spectrometry (SELDI-TOF MS), and identified a candidate protein by liquid chromatography/mass spectrometry ion trap time-of-flight (LCMS-IT-TOF).

Results: Of the qualified mass peaks obtained by EDM analysis, 41 proteins were differentially expressed in 11 human colorectal cancer cell lines. Among these proteins, the peak intensity of 11.1 kDa protein was strongly correlated with the L-OHP sensitivity (50% inhibitory concentrations) ($P < 0.001$, $R^2 = 0.80$). We identified this protein as Protein S100-A10 (S100A10) by MS/MS ion search using LCMS-IT-TOF. We verified its differential expression and the correlation between S100A10 protein expression levels in drug-untreated CRC cells and their L-OHP sensitivities by Western blot analyses. In addition, S100A10 protein expression levels were not correlated with sensitivity to 5-fluorouracil, suggesting that S100A10 is more specific to L-OHP than to 5-fluorouracil in CRC cells. S100A10 was detected in cell culture supernatant, suggesting secretion out of cells.

Conclusions: By proteomic approaches including SELDI technology, we have demonstrated that intracellular S100A10 protein expression levels in drug-untreated CRC cells differ according to cell lines and are significantly correlated with sensitivity of CRC cells to L-OHP exposure. Our findings provide a new clue to searching predictive markers of the response to L-OHP, suggesting that S100A10 is expected to be one of the candidate protein markers.

Keywords: oxaliplatin, biomarker, S100A10, colorectal cancer, SELDI-TOF MS

Background

Oxaliplatin (L-OHP) is a third-generation platinum compound, used as a key drug for the treatment of colorectal cancer (CRC). L-OHP and bolus/infusional 5-fluorouracil (5-FU) combined with folinic acid (FOLFOX) have yielded high response rates ($\approx 50\%$) and good overall survival [1-4]. However, approximately half of all patients who receive FOLFOX gain no benefit, despite the usual risk of toxicity. The ability to predict a

patient's response to L-OHP-based regimens would thus facilitate the rational use of chemotherapy for CRC.

Several predictive markers of the response to platinum-based chemotherapy have been proposed on the basis of various mechanisms of chemoresistance to platinum drugs, including DNA-repair pathways and detoxification pathways, as well as drug metabolism and transport [5]. Genomic polymorphisms participating in nucleotide excision repair pathways, such as excision repair cross-complementing rodent repair deficiency, complementation group 1 (*ERCC1*) and xeroderma pigmentosum group D (*XPB*, also known as *ERCC2*), and the glutathione-S-transferase family of isozymes in

* Correspondence: tanigawara-yusuke@umin.ac.jp

¹Department of Clinical Pharmacokinetics and Pharmacodynamics, School of Medicine, Keio University, 35 Shinanomachi, Shinjuku-ku, Tokyo 160-8582, Japan

Full list of author information is available at the end of the article

detoxification pathways are considered potential predictors of clinical outcomes in patients given L-OHP-based chemotherapy [6-9]. However, how to predict the clinical response of CRC to L-OHP-based chemotherapy remains unclear [10].

Protein expression profiles reflect the intracellular biological status more directly than gene markers because gene expression provides no information on post-translational modifications. Recently, the ProteinChip[®] System, using surface-enhanced laser desorption/ionization time-of-flight mass spectrometry (SELDI-TOF MS), has been widely used to obtain protein profiles of biological samples [11]. This system is high-throughput, requires only small samples, and can comprehensively analyze hundreds of proteins directly from crude samples [12]. Moreover, SELDI-TOF MS is well suited for analyzing low-molecular weight proteins (< 20 kDa), which are abundant in physiologically important proteins, such as cytokines, chemokines, or fragments of larger proteins.

We aimed to identify protein biomarker candidates predictive of L-OHP sensitivity. By proteomic approaches including SELDI technology, we have identified a candidate protein using CRC cell lines.

Results

L-OHP sensitivity

The 50% inhibitory concentration (IC_{50}) values of 11 CRC cell lines with different chemosensitivities to L-OHP were measured. The evaluated IC_{50} values (μM) (mean \pm S.D.) were as follows: COLO205, 0.822 ± 0.236 ; SW620, 0.937 ± 0.332 ; COLO-320, 1.48 ± 0.51 ; SW480, 1.80 ± 1.62 ; LS174T, 1.90 ± 0.44 ; HCT15, 2.51 ± 0.61 ; COLO201, 2.87 ± 1.67 ; WiDR, 7.72 ± 4.67 ; DLD-1, 8.29 ± 1.85 ; HT29, 12.4 ± 5.7 ; SW1116, 29.7 ± 13.6 (Figure 1A).

Candidate biomarker selection

We obtained the protein profiles of 11 human CRC cell lines other than HCT116 which was reserved for subsequent validation. Of the qualified mass peaks obtained by expression difference mapping (EDM) analysis, 41 proteins were differentially expressed in 11 human colorectal cancer cell lines (Figure 1A). Of these, the peak intensity of the 11.1 kDa protein strongly correlated with the sensitivity to L-OHP ($P < 0.001$, $R^2 = 0.80$; Figure 1B). This correlation was independent of cell type and cell growth rate, because the doubling times of the 10 cell lines were similar (20.8-28.5 h). The doubling time of SW1116 was 105 hr (data not shown). These data suggest that this protein is a candidate biomarker that strongly correlates with sensitivity to L-OHP.

Protein characterization

We first characterized the protein by SELDI retentate chromatography mass spectrometer (SELDI-RCMS)

using cell lysates of HT29. This protein had a high affinity to CM10 array in acidic environment and was undetectable on the array at pH 7.0-7.5, indicating a pI in this pH range (Figure 2A). The experimental molecular mass was estimated as m/z (mass-to-charge ratio) 11,072 by internal calibration (Figure 2B).

Protein identification

Figure 3A shows the Coomassie brilliant blue (CBB)-stained 2D gels of cell lysates from HT29 and COLO-320. Based on the experimental pI and mass determined, we obtained 4 spots from the HT29-gel, which showed over 3-fold differences in densitometric volumes in HT29-gel as compared with those in COLO-320-gel. Three proteins obtained by in-gel trypsin digestion of the spots were identified (Table 1). The 11.1 kDa protein was identified as Protein S100-A10 (UniProtKB/Swiss-Prot: P60903) (S100A10), which was derived from spot 4 (Figure 3B). The theoretical molecular weight (11,072 Da) and theoretical pI (7.31) of S100A10 (UniProtKB/Swiss-Prot, <http://www.expasy.org>) were consistent with the experimental values determined by SELDI-RCMS.

Validation of the identified protein by Western blot analysis

To confirm the identified protein and to validate the results of SELDI-TOF MS analysis, Western blot analyses of Protein S100A10 in whole cell lysates from 8 CRC cell lines (HCT15, COLO-320, LS174T, SW620, SW480, HT29, DLD-1 and HCT116) were performed. HCT116, which was not used in the candidate search study, was newly introduced in this validation study. Western blot densitometry of S100A10 was consistent with the peak intensity detected on SELDI-TOF MS (Figure 4A). Figure 4B shows a high correlation between the peak intensity at m/z 11,072 detected on SELDI-TOF MS and the Western blot densitometry for S100A10 ($P < 0.001$, $R = 0.81$). We identified the candidate protein as S100A10 and confirmed that S100A10 was differentially expressed by the CRC cell lines.

Correlation between S100A10 protein expression levels and sensitivity to L-OHP or 5-fluorouracil (5-FU)

To confirm the results of candidate search study by SELDI-TOF MS analysis, we investigated the relationship between the sensitivity to L-OHP and S100A10 protein expression levels quantified by Western blot densitometry in 7 cell lines, which were used in the candidate search study, as the index data set. The cells with higher S100A10 protein expression levels tended to exhibit lower chemosensitivity to L-OHP (Figure 5A). The data points of newly introduced HCT116 were plotted in lower limit of the 95% prediction interval,

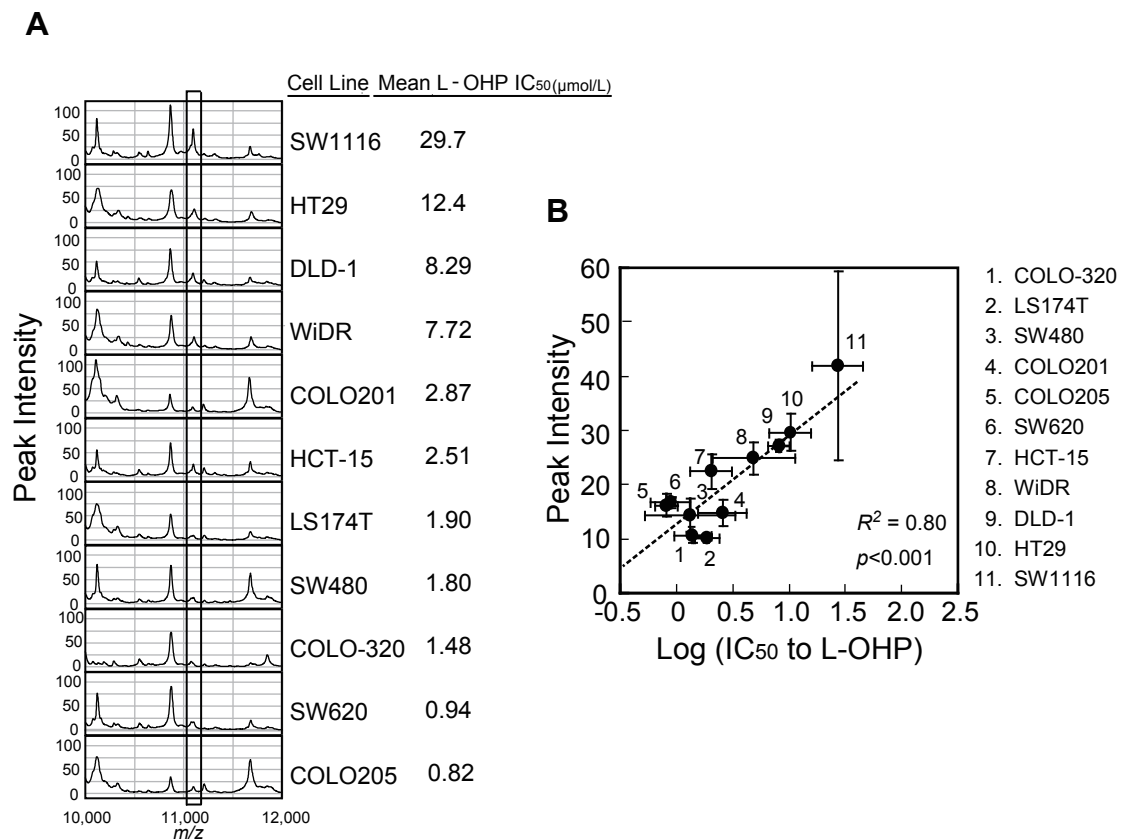


Figure 1 L-OHP sensitivity and candidate peak selection. (A) Protein expression profiles of each cell line on CM10 array at pH 4.5. The candidate peak is enclosed by the rectangle. (B) Peak intensity of the 11.1 kDa protein in 11 CRC cell lines strongly correlates with L-OHP sensitivity. The peak intensity and IC₅₀ value of each cell line are plotted as means ± S.D. (peak intensity, n = 3; IC₅₀, n = 3 or 4).

showing its high chemosensitivity to L-OHP with a low protein expression of S100A10, consisting with our findings. On the other hand, there was no significant correlation between S100A10 protein expression levels and IC₅₀ values for 5-FU ($P = 0.40$, $R^2 = 0.04$, Figure 5B), demonstrating that the S100A10 protein expression level does not reflect chemosensitivity to 5-FU, the anti-tumor mechanism of which differs from that of platinum-containing compounds. The IC₅₀ values (μM) (mean ± S.D.) of 8 cell lines for 5-FU were as follows: HCT116, 1.84 ± 0.29 ; HCT15, 3.59 ± 1.29 ; COLO-320, 1.81 ± 0.34 ; LS174T, 16.5 ± 2.8 ; SW620, 9.72 ± 2.00 ; SW480, 4.95 ± 0.16 ; HT29, 12.0 ± 3.5 ; and DLD-1, 4.73 ± 0.96 .

Presence of S100A10 in the culture supernatant

To assess the extracellular secretion of S100A10, Western blotting was performed for serum-free conditioned medium (SFCM) incubated with HT29 or DLD-1, which exhibit high protein expression levels of intracellular S100A10. The result demonstrated the presence of S100A10 in culture supernatant (Figure 6). Cell viability

was > 80% after incubation with serum-free medium (data not shown).

Discussion

Predictive markers of chemotherapeutic response are urgently needed to improve the outcomes of cancer treatment. Predictive markers of the response to L-OHP have not yet been established [5], and clinically available protein markers of drug-response are also limited [13]. In this study, by proteomic approach, we found that intracellular S100A10 protein expression levels were significantly correlated with sensitivity of CRC cells to L-OHP, providing a new clue to predictive markers of the response to L-OHP.

The SELDI peak intensity of S100A10 varied more than 4-fold among various CRC cell lines (Figure 1), and Western blot analysis confirmed the differential expression of S100A10 (Figure 4). This is the first time to report the differential protein expression of S100A10 in a variety of CRC cell lines. These data also confirmed the quantitative accuracy of SELDI peak intensity, indicating the usefulness of ProteinChip technology for

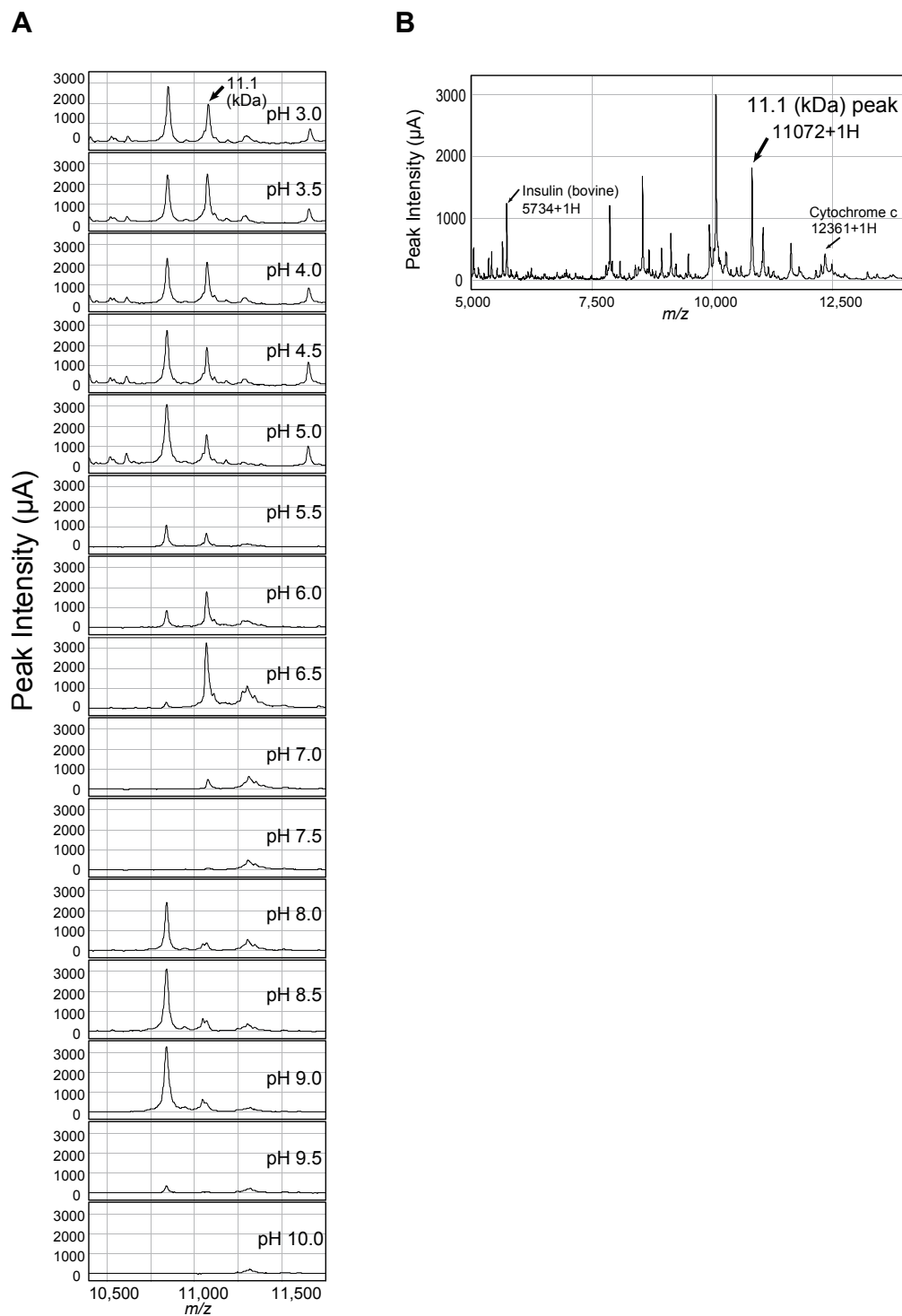


Figure 2 Characterization of the 11.1 kDa protein. (A) Estimation of pI of the 11.1 kDa protein. The affinity of the 11.1 kDa protein (indicated by the arrow) to a CM10 array changed with a pH range of 3.0-10.0. (B) Estimation of experimental molecular mass of the 11.1 kDa protein (indicated by the arrow). Bovine insulin (5733.5 Da) and equine cytochrome C (12361.0 Da) were calibrants for internal calibration.

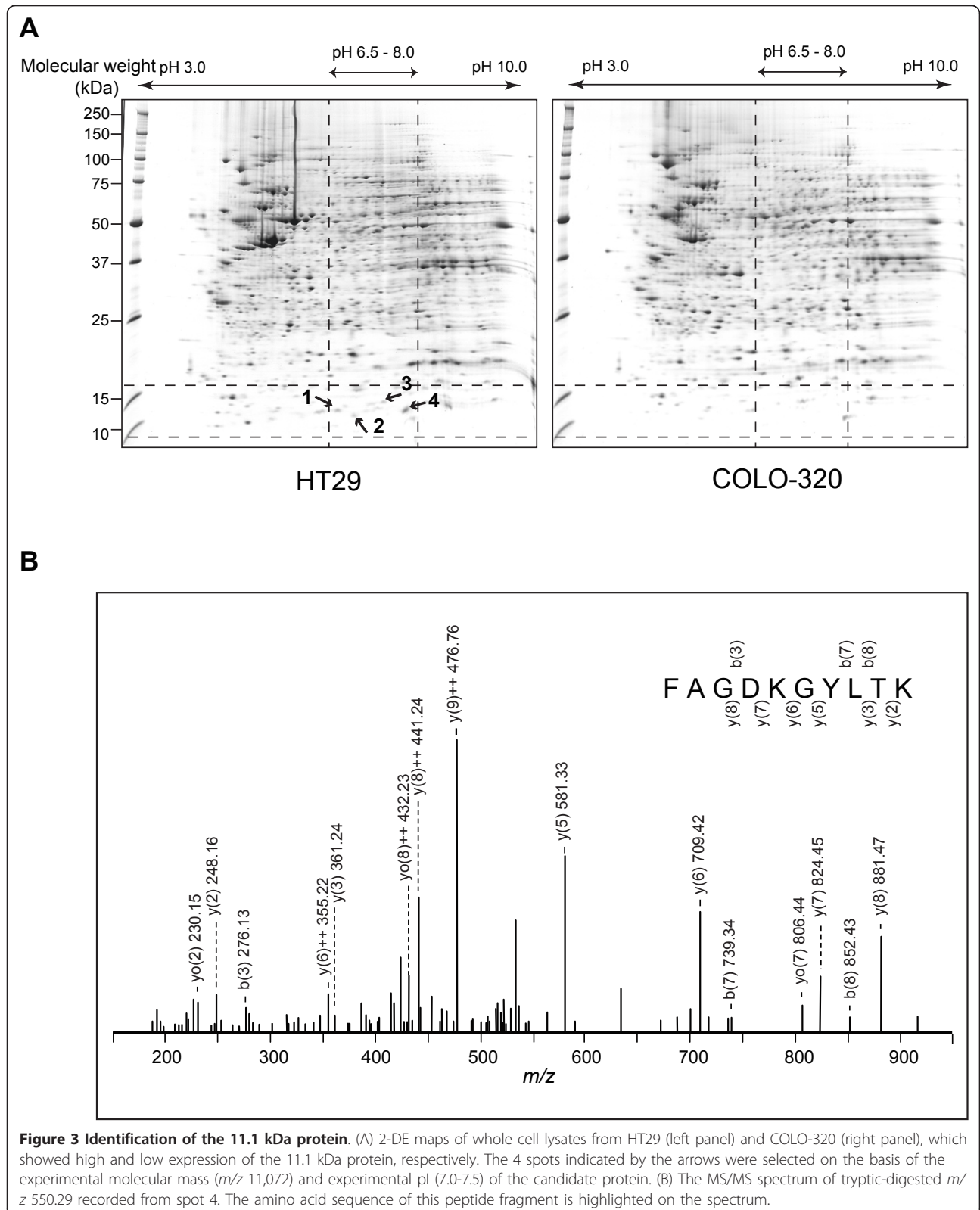


Table 1 List of identified proteins.

Mass spectrum data: protein data of all 2-DE spots selected, peptide data from spot 4 and sequence coverage of spot 4 (Protein S100-A10).

Protein Data		Physical data			MS/MS ion search results		Characterization of 11.1 kDa protein by SELDI-TOF MS	
Spot (s)	Protein name	Swiss-Prot			In gel digestion from 2-DE		Observed molecular mass (m/z)	Observed pI
		Swiss-Prot Accession No.	Theoretical molecular weight using Expsy tool (Da)	Theoretical pI using Expsy tool	Sequence coverage (%)	Mowse score		
1	Protein S100-A11	P31949	11741	6.55	26	78		
2	No hit	-	-	-	-	-		
3	Beta-2 microglobulin	P61769	11731	6.08	17	65		
4	Protein S100-A10	P60903	11072	7.31	10	38	11072	7.0-7.5

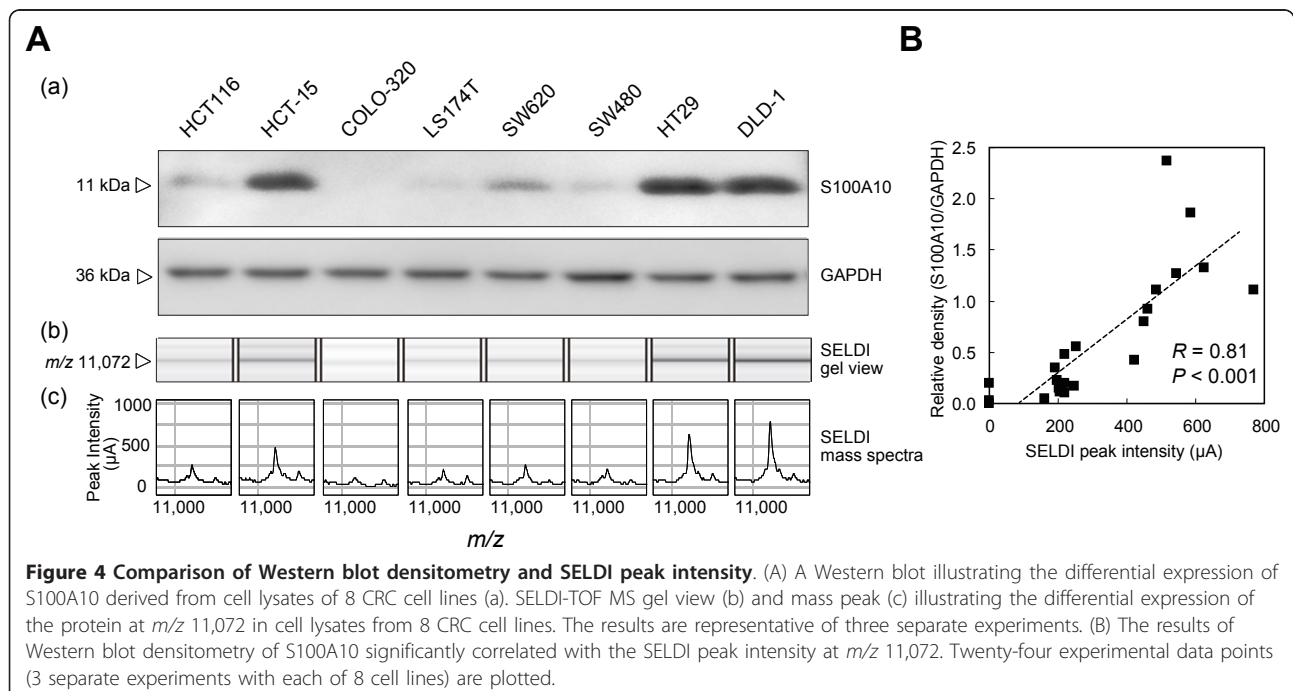
Peptide data from spot 4 (Protein S100-A10)

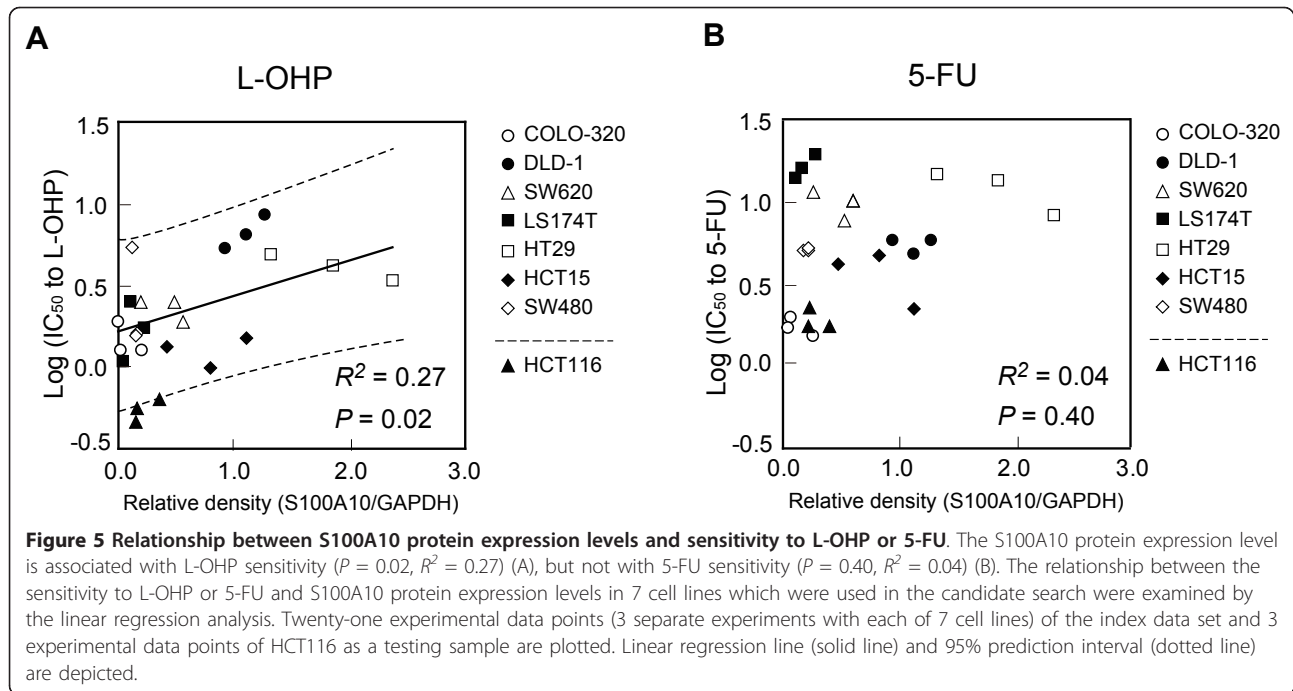
Start - End	Observed	Mr (expt)	Mr (calc)	Delta	Miss	Sequence
18 - 27	550.29	1098.57	1098.57	0.00	1	K FAGDKGYLTK E

Sequence coverage

Matched peptide is underlined
 1 PSQMEHAMET MMFTFHKFAG DKGYLTKEDL RVLMEKEFPG FLENQKDPL
 51 VDKIMKDLQ CRDGKVGFS FFSLIAGLTI ACNDYFVWHM KQKGGK

Mowse score > 30 indicates identity or extensive homology ($p < 0.05$). Search parameters: MS/MS ion search, enzyme: trypsin, fixed modification: carbamidomethyl (C), variable modification: oxidation (M), peptide tolerance: ± 0.05 Da, fragment mass tolerance: ± 0.05 Da, max missed cleavage: 1.





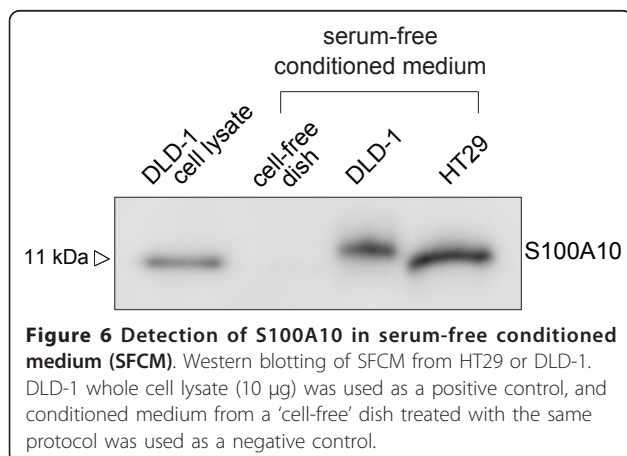
further clinical validation of S100A10 in the next step of our research with high sample throughput.

S100A10 is a member of the S100 family of proteins. It has been shown to interact with a variety of proteins, including plasma membrane-resident receptors and channels such as serotonin 1B (5-HT_{1B}) receptor [14-17], indicating that S100A10 is an active regulator and/or is involved in the trafficking of cellular/membrane proteins which lead to various biological functions. S100A10 mRNA, S100A10 protein, or both have been found in many types of cells, tissues, and tumors [18-23]. S100A10 has been identified as a plasminogen receptor, suggesting its promotion of angiogenesis and tumor metastasis [24,25]. S100A10 has thus attracted

considerable attention for its role in cancer development. However, our present results demonstrate for the first time that S100A10 correlates with the chemosensitivity of CRC cells to L-OHP.

In this study we indicate that intracellular S100A10 in CRC cells is associated with cell survival after L-OHP exposure, not 5-FU exposure (Figure 1, Figure 5), suggesting that S100A10 is a potential biomarker more specific to L-OHP. *ERCC1* has been suggested to play an important role in resistance to platinum-based chemotherapy [5]. However, the UK MRC FOCUS (Fluorouracil, Oxaliplatin, CPT-11: Use and Sequencing) clinical trial, the largest randomized biomarker trial in metastatic CRC to date, reported no significant association of response with *ERCC1*, *ERCC2*, glutathione-S-transferase-P1 (*GSTP1*), or other candidate biomarkers that had previously shown promise [10]. The value of *ERCC1* as a predictive marker of the response to L-OHP-based chemotherapy remains uncertain [26].

Mechanisms of S100A10 involvement in chemoresistance are unknown at this moment. However, a few studies have reported an association of S100A10 with cell viability. S100A10 interacts with BAD (Bcl-xL/Bcl-2 associated death promoter), a death enhancer, and blunts its pro-apoptotic activity [27]. S100A10 is induced by nerve growth factor, and increased S100A10 levels promote the proliferation of PC12 cells, a pheochromocytoma cell line [28]. These previous results agree with our finding that CRC cells with high intracellular S100A10 expression enhanced cell survival after L-



OHP exposure. S100A10 interacts with cytosolic phospholipase A2 (cPLA2, 85-kDa) and inhibits its activity, resulting in decreased release of arachidonic acid (AA) [29]. S100A10 also interacts with 5-HT_{1B} receptor and modulates its function [17]. Both AA and serotonin play important role in CRC physiology [30-33]. S100A10 may be involved in releasing pro-inflammatory cytokines. Down-regulation of S100A10 in human macrophages inhibits the plasmin-induced release of pro-inflammatory cytokines such as interleukin-6 [34], which has been suggested to promote cell growth and apoptosis-escape of colon cancer [35,36].

A number of factors were reported to regulate S100A10 expression [37], leading to another speculation that intracellular S100A10 is a surrogate of other active molecules related to cell survival after exposure to anticancer agents, as follows. Down-regulation of caveolin-1, which has recently attracted attention for its potential role in chemoresistance [38,39], reduces intracellular S100A10 protein expression and its localization to caveolae in HCT116, although the mechanisms involved are unknown [40].

Most S100A10 is tightly associated with the dimers of annexin A2 (ANXA2), forming an (ANXA2)₂-(S100A10)₂ heterotetramer [41-43]. ANXA2 is a member of the annexin family which has been reported to have multiple functions [44-47], and requires S100A10 for its action and translocation to the cell surface [48]. These previous observations indicate the possibility that intracellular S100A10 protein reflects the handling of other active molecules related to cell survival after exposure to anticancer agents.

S100A10 appears to merit further investigation as a potential predictive biomarker of the response of CRC to L-OHP. We have also demonstrated the presence of S100A10 in cell culture supernatant (Figure 6), suggesting that S100A10 undergoes extracellular secretion. In addition, recently, S100A10 was detected in human serum and the list of plasma protein [49,50], thereby allowing blood level monitoring of S100A10 for further clinical validation as a biomarker for the L-OHP sensitivity.

Thus, molecular backgrounds of S100A10 described in previous reports are partly consistent with our hypothesis that S100A10 expression level may reflect the chemosensitivity, from a view of chemosensitivity. However, mechanisms of S100A10 involvement in chemoresistance are unknown and the reason why S100A10 is more predictive of L-OHP sensitivity than 5-FU sensitivity is not clarified in this study. The present study was designed to identify and characterize S100A10 associated with the chemosensitivity. The molecular mechanisms of S100A10 as a predictive biomarker of L-OHP response will be addressed in subsequent studies.

Conclusions

We have demonstrated by proteomic approaches including SELDI technology that intracellular S100A10 protein expression levels in drug-untreated CRC cells differ according to cell lines and are significantly correlated with sensitivity of CRC cells to L-OHP exposure. Our results provide new primary findings for searching predictive markers of the response to L-OHP, suggesting that S100A10 is expected to be one of the candidate protein markers. To confirm this hypothesis, further clinical validation and functional analysis to elucidate the underlying biological mechanisms are necessary.

Methods

Agents and antibodies

L-OHP was kindly provided by Yakult Honsha, Co., Ltd. (Tokyo, Japan). 5-FU was purchased from Sigma-Aldrich (St. Louis, MO, USA). Purified mouse anti-human annexin II Light Chain (S100A10) mAb was obtained from BD Biosciences (Mississauga, ON, Canada), and anti-human GAPDH mAb was obtained from Applied Biosystems (Foster City, CA, USA). All other chemicals and reagents were of the highest purity available.

Cell cultures

Twelve human CRC cell lines were used. DLD-1, HT29, SW480, SW1116, WiDR, and HCT116 were purchased from the European Collection of Cell Cultures (Salisbury, UK), and SW620 was purchased from the American Type Culture Collection (Manassas, VA, USA). COLO205, HCT-15, and LS174T were provided by the Cell Resource Center for Biomedical Research, Tohoku University (Sendai, Japan). COLO201 was provided by the Japanese Collection of Research Bioresource (Tokyo, Japan), and COLO-320 was provided by RIKEN Bio-Resource (Tsukuba, Japan). The cells were cultured in RPMI 1640 medium supplemented with 10% FBS and 2 mM glutamine at 37°C in humidified air containing 5% CO₂. Exponentially growing cells were used.

Chemosensitivity tests and IC₅₀ determination

The cells were plated at the following densities in 96-well plates: COLO205, HCT15, HT29, and WiDR, 1000 cells/well; COLO201, DLD-1, LS174T, HCT116, and SW620, 1500 cells/well; COLO-320 and SW480, 3000 cells/well; and SW1116, 5000 cells per well. The cells were cultured for 24 h before addition of various concentrations of L-OHP, ranging from 0 to 1000 μM. Cell viability after incubation with L-OHP for 48 h was assayed using the CellTiter96[®] Aqueous One Solution Cell Proliferation Assay (MTS assay, Promega Corporation, Madison, WI, USA) according to the manufacturer's protocol. The sensitivity of cells to L-OHP was

evaluated by determining the IC_{50} values by fitting the concentration-survival curve to a logistic function:

$$P = 1 / (1 + \exp(-\alpha - \beta \cdot \log D))$$

P: ratio to drug-free control

D: drug concentration

$$IC_{50} = 10^{(-\alpha/\beta)}$$

IC_{50} values of cells treated with 5-FU were also evaluated with the MTS assay after 72 h of exposure to 5-FU in concentrations ranging from 0 to 10 mM. The IC_{50} values for L-OHP or 5-FU were log transformed for normal distribution, and the $\log_{10}IC_{50}$ values were used for further statistical analysis.

Sample preparation

Cells were washed 3 times with cold PBS and lysed in a lysis buffer containing 9 M urea, 2% CHAPS, 1 mM dithiothreitol, and protease inhibitor cocktail (Sigma-Aldrich, St. Louis, MO, USA). After incubation on ice for 10 min followed by sonication on ice, the lysates were centrifuged at $15,000 \times g$ for 30 min at $4^{\circ}C$, and the supernatant was collected. The protein concentration was determined by DC Protein Assay (Bio-Rad Laboratories, Hercules, CA, USA), and aliquots were quickly frozen in liquid nitrogen and stored at $-80^{\circ}C$ until analysis.

SELDI ProteinChip array preparation

Weak cation-exchange ProteinChip CM10 arrays (Bio-Rad Laboratories, Hercules, CA, USA) were used for protein profiling. Protein concentrations of the cell lysates were adjusted to 5 mg/mL by adding lysis buffer and then diluted to 1 mg/mL with binding/washing buffer (50 mM sodium acetate [pH 4.5]). CM10 arrays were equilibrated with 150 μ L binding/washing buffer for 5 min, and incubated with 100 μ L of diluted sample. After 1 h, each spot was washed 3 times with 150 μ L binding/washing buffer and rinsed twice with 400 μ L of distilled water. After air-drying, 0.5 μ L of a saturated solution of sinapic acid in 50% (v/v) acetonitrile containing 0.1% (v/v) trifluoroacetic acid was applied twice to the surface of each spot and dried.

SELDI-TOF MS analysis

The prepared CM10 arrays were analyzed using a ProteinChip SELDI Reader, Model PBS IIC (CIPHERGEN Biosystems, Fremont, CA, USA), for EDM analysis in the candidate selection study, and Model PCS-4000 personal edition (Bio-Rad Laboratories, Hercules, CA, USA) for the subsequent confirmation study. Mass spectrometry profiles were generated using 108 laser shots with a laser intensity of 220 and a detector sensitivity of 8 for PBS IIC, or 265 laser shots with a laser intensity of 3000

nJ for PCS-4000. The m/z of each protein was determined with the use of externally calibrated standards (ProteoMass™ Peptide & Protein MALDI-MS Calibration Kit, Sigma-Aldrich, St. Louis, MO, USA). Peaks were auto-detected at an m/z of 2,000 to 30,000 and a signal-to-noise ratio of > 5 for PBS IIC or a valley depth of 5 for PCS-4000. Spectra were baseline-subtracted and normalized to the total ion current. All calculations were performed using ProteinChip data manager software (Bio-Rad Laboratories, Hercules, CA, USA).

Correlation analysis between protein expression and chemosensitivity

To identify protein biomarkers, we screened proteins whose peak intensity was associated with the sensitivity to L-OHP, by investigating the relations between IC_{50} values for L-OHP and each peak intensity on EDM analysis across 11 cell lines (excluding HCT116) by linear regression analysis. Candidate peaks were then selected according to the following criteria: P value < 0.05 and coefficient of determination (R^2 ; R , Pearson correlation coefficient) > 0.5 .

Identification of candidate biomarker proteins

Characterization of target proteins

A SELDI-RCMS on CM10 arrays was used to estimate the experimental pI of the target protein [51]. Briefly, whole cell lysates from HT29 were diluted with binding buffers (pH 3.0-10.0 in 0.5 increments) and analyzed using the PCS-4000. To estimate the experimental molecular mass of the target protein, internal calibration was carried out using bovine insulin (5733.5 Da) and equine cytochrome C (12361.0 Da) of ProteoMass™ Peptide & Protein MALDI-MS Calibration Kit (Sigma-Aldrich, St. Louis, MO, USA), which bookended the target protein.

Two-dimensional electrophoresis (2-DE)

To identify the target protein, we used HT29 and COLO-320, which show high or low expression of this protein, respectively. After desalting and concentrating the cell lysates (250 μ g) by acetone precipitation, cell extracts dissolved in isoelectric focusing (IEF) buffer containing 6 M urea, 2 M thiourea, 3% CHAPS, 1% Triton X-100 and DeStreak reagent (GE Healthcare, Little Chalfont, UK) were rehydrated in Immobiline DryStrip gel (pH 3-10 non-linear, GE Healthcare, Little Chalfont, UK) for 12 h. Then, IEF was performed at 150 V for 1 h, followed by 5,000 V ramping for 2.5 h and 5,000 V IEF for 15 h. Before 2-dimensional PAGE (2D-PAGE), the strip gel was equilibrated in sample buffer (6 M urea, 20% glycerol, 2% DTT, 2% SDS, 375 mM Tris-HCl, pH 8.8) for 45 min. 2D-PAGE was performed using polyacrylamide gradient gel (10-18%). SDS-PAGE gels were stained with CBB G-250 (Bio-Rad Laboratories, Hercules, CA, USA). Images were acquired with a

GS-800 calibrated densitometer (Bio-Rad Laboratories, Hercules, CA, USA) and analyzed with PDQuest 7.2.0 software (Bio-Rad Laboratories, Hercules, CA, USA).

MS/MS ion search and protein identification

Protein identification of gel spots was performed by LCMS-IT-TOF (Shimadzu, Kyoto, Japan). The gel pieces of interests were excised from the gel, and in-gel digestion of protein was performed. Tryptic peptides were separated via reversed-phase liquid chromatography/mass spectrometry using DiNa nanoLC (KYA Tech Corporation, Tokyo, Japan) for analytical separation on a New Objective PicoFrit BetaBasic C18 column (100 mm × 75 μm). Mass spectrometric analysis ([+] ESI) was carried out on an LCMS-IT-TOF with argon gas for ion cooling and CID experiments. Tandem mass spectrometry data were obtained in a data-dependent manner. A Mascot search engine (Matrix Science, Boston, MA, USA) was used for protein database searching. Search parameters are described in Table 1. Proteins with statistically significant MASCOT/Mowse score (> 30), indicating identity or extensive homology ($p < 0.05$), were considered to be identified.

Preparation of SFCM

HT29 or DLD-1 cells were plated at a density of 1×10^7 cells per 10-cm dish and incubated for 24 h. The medium was changed, and after additional incubation for 24 h, the cells were washed 6 times with serum-free fresh medium (SFM) and received 8 mL of SFM per 10-cm dish. After 24 h incubation with SFM, the resultant conditioned medium containing secreted proteins was centrifuged to remove cell debris and concentrated 1000-fold by ultrafiltration with an Amicon[®] Ultra Centrifugal Filter and a 3,000 Dalton molecular mass cutoff spin column (Millipore Corporation, Billerica, MA, USA). As a negative control, a 'cell-free' dish was treated with the same protocol.

Western blot analysis

Total cell lysates (5 μg protein) and concentrated SFCM (15 μL) were fractionated by SDS-PAGE. The separated proteins were transferred electrophoretically to PVDF membranes by using an iBlot[®] Dry Blotting System (Invitrogen, Carlsbad, CA, USA). After blocking, the blots were probed with a 1:5000 dilution of mouse anti-human S100A10 primary antibody or a 1:4000 dilution of mouse anti-human GAPDH primary antibody and developed with a WesternBreeze[®] Chemiluminescent Western Blot Immunodetection Kit according to the manufacturer's instructions (Invitrogen, Carlsbad, CA, USA). GAPDH was used as a loading control. Protein bands were visualized with an LAS 4000 mini imaging system (FUJIFILM, Tokyo, Japan) and analyzed with Multi Gauge software Ver 3.0 (FUJIFILM, Tokyo, Japan).

Statistical analysis

Statistical analyses were performed using SPSS software 17.0J for Windows (SPSS, Chicago, IL, USA). To evaluate relations between two variables, correlation analysis and regression analyses were used. P values < 0.05 were considered statistically significant. All tests were two-sided.

List of abbreviations

L-OHP: oxaliplatin; CRC: colorectal cancer; EDM: expression difference mapping; SELDI-TOF MS: surface-enhanced laser desorption/ionization time-of-flight mass spectrometry; LCMS-IT-TOF: liquid chromatography/mass spectrometry ion trap time-of-flight; IC₅₀: 50% inhibitory concentration; ERCC1: excision repair cross-complementing rodent repair deficiency; complementation group 1; XPD/ERCC2: xeroderma pigmentosum group D; GSTP1: glutathione-S-transferase-P1; SELDI-RCMS: SELDI retentate chromatography mass spectrometer; m/z : mass-to-charge ratio; CBB: Coomassie brilliant blue; 5-FU: 5-fluorouracil; SFCM: serum-free conditioned medium; ANXA2: annexin A2; mAb: monoclonal antibody; SFM: serum-free fresh medium.

Acknowledgements

This work was supported by Grants-in-Aid for Scientific Research from the Ministry of Education, Culture, Sports, Science and Technology (MEXT) of Japan (Yusuke Tanigawara, 20390049 and Sayo Suzuki, 21590176) and a research grant from Yakult Honsha Co., Ltd.

Author details

¹Department of Clinical Pharmacokinetics and Pharmacodynamics, School of Medicine, Keio University, 35 Shinanomachi, Shinjuku-ku, Tokyo 160-8582, Japan. ²Hospital Pharmacy, Keio University Hospital, 35 Shinanomachi, Shinjuku-ku, Tokyo 160-8582, Japan.

Authors' contributions

YT was responsible for planning and designing the study and data interpretation. SS performed the experiments and the data analysis and wrote the manuscript. YY participated in SELDI-TOF MS analysis. AN participated in cell culture. All authors read and approved the final manuscript.

Competing interests

Yusuke Tanigawara received a research grant from Yakult Honsha Co., Ltd. Sayo Suzuki, Yasuko Yamayoshi and Akito Nishimuta declare no competing interests.

Received: 18 August 2011 Accepted: 30 December 2011

Published: 30 December 2011

References

1. Giacchetti S, Perpoint B, Zidani R, Le Bail N, Faggiuolo R, Focan C, Chollet P, Llory JF, Letourneau Y, Coudert B, Bertheaut-Cvitkovic F, Larregain-Fournier D, Le Rol A, Walter S, Adam R, Misset JL, Levi F: **Phase III Multicenter Randomized Trial of Oxaliplatin Added to Chronomodulated Fluorouracil-Leucovorin as First-Line Treatment of Metastatic Colorectal Cancer.** *J Clin Oncol* 2000, **18**:136-147.
2. de Gramont A, Figer A, Seymour M, Homerin M, Hmissi A, Cassidy J, Boni C, Cortes-Funes H, Cervantes A, Freyer G, Papamichael D, Le Bail N, Louvet C, Hendlér D, de Braud F, Wilson C, Morvan F, Bonetti A: **Leucovorin and Fluorouracil With or Without Oxaliplatin as First-Line Treatment in Advanced Colorectal Cancer.** *J Clin Oncol* 2000, **18**:2938-2947.
3. Rothenberg ML, Oza AM, Bigelow RH, Berlin JD, Marshall JL, Ramanathan RK, Hart LL, Gupta S, Garay CA, Burger BG, Le Bail N, Haller DG: **Superiority of oxaliplatin and fluorouracil-leucovorin compared with either therapy alone in patients with progressive colorectal cancer after irinotecan and fluorouracil-leucovorin: interim results of a phase III trial.** *J Clin Oncol* 2003, **21**:2059-2069.
4. Grothey A, Sargent D, Goldberg RM, Schmoll H-J: **Survival of Patients With Advanced Colorectal Cancer Improves With the Availability of**

- Fluorouracil-Leucovorin, Irinotecan, and Oxaliplatin in the Course of Treatment. *J Clin Oncol* 2004, **22**:1209-1214.
5. Rabik CA, Dolan ME: Molecular mechanisms of resistance and toxicity associated with platinum agents. *Cancer Treat Rev* 2007, **33**:9-23.
 6. Viguier J, Boige V, Miquel C, Pocard M, Giraudeau B, Sabourin J-C, Ducreux M, Sarasin A, Praz F: ERCC1 Codon 118 Polymorphism Is a Predictive Factor for the Tumor Response to Oxaliplatin/5-Fluorouracil Combination Chemotherapy in Patients with Advanced Colorectal Cancer. *Clin Cancer Res* 2005, **11**:6212-6217.
 7. Stoehlmacher J, Park DJ, Zhang W, Yang D, Groshen S, Zahedy S, Lenz HJ: A multivariate analysis of genomic polymorphisms: prediction of clinical outcome to 5-FU/oxaliplatin combination chemotherapy in refractory colorectal cancer. *Br J Cancer* 2004, **91**:344-354.
 8. Ruzzo A, Graziano F, Loupakis F, Rulli E, Canestrari E, Santini D, Catalano V, Ficarella R, Maltese P, Bisonni R, Masi G, Schiavon G, Giordani P, Giustini L, Falcone A, Tonini G, Silva R, Mattioli R, Floriani I, Magnani M: Pharmacogenetic Profiling in Patients With Advanced Colorectal Cancer Treated With First-Line FOLFOX-4 Chemotherapy. *J Clin Oncol* 2007, **25**:1247-1254.
 9. Park DJ, Stoehlmacher J, Zhang W, Tsao-Wei DD, Groshen S, Lenz H-J: A Xeroderma Pigmentosum Group D Gene Polymorphism Predicts Clinical Outcome to Platinum-based Chemotherapy in Patients with Advanced Colorectal Cancer. *Cancer Res* 2001, **61**:8654-8658.
 10. Braun MS, Richman SD, Quirke P, Daly C, Adlard JW, Elliott F, Barrett JH, Selby P, Meade AM, Stephens RJ, Parmar MKB, Seymour MT: Predictive Biomarkers of Chemotherapy Efficacy in Colorectal Cancer: Results From the UK MRC FOCUS Trial. *J Clin Oncol* 2008, **26**:2690-2698.
 11. Xiao Z, Prieto D, Conrads TP, Veenstra TD, Issaq HJ: Proteomic patterns: their potential for disease diagnosis. *Mol Cell Endocrinol* 2005, **230**:95-106.
 12. Maggie Merchant SRW: Recent advancements in surface-enhanced laser desorption/ionization-time of flight-mass spectrometry. *Electrophoresis* 2000, **21**:1164-1177.
 13. Ludwig JA, Weinstein JN: Biomarkers in cancer staging, prognosis and treatment selection. *Nat Rev Cancer* 2005, **5**:845-856.
 14. Okuse K, Malik-Hall M, Baker MD, Poon WY, Kong H, Chao MV, Wood JN: Annexin II light chain regulates sensory neuron-specific sodium channel expression. *Nature* 2002, **417**:653-656.
 15. Donier E, Rugiero F, Okuse K, Wood JN: Annexin II light chain p11 promotes functional expression of acid-sensing ion channel ASIC1a. *J Biol Chem* 2005, **280**:38666-38672.
 16. van de Graaf SF, Hoenderop JG, Gkika D, Lamers D, Prenen J, Rescher U, Gerke V, Staub O, Nilius B, Bindels RJ: Functional expression of the epithelial Ca(2+) channels (TRPV5 and TRPV6) requires association of the S100A10-annexin 2 complex. *EMBO J* 2003, **22**:1478-1487.
 17. Svenningsson P, Chergui K, Rachleff I, Flajolet M, Zhang X, Yacoubi ME, Vaugeois J-M, Nomikos GG, Greengard P: Alterations in 5-HT1B Receptor Function by p11 in Depression-Like States. *Science* 2006, **311**:77-80.
 18. El-Rifai W, Moskaluk CA, Abdrabbo MK, Harper J, Yoshida C, Riggins GJ, Frierson HF Jr, Powell SM: Gastric Cancers Overexpress S100A Calcium-binding Proteins. *Cancer Res* 2002, **62**:6823-6826.
 19. Zhi H, Zhang J, Hu G, Lu J, Wang X, Zhou C, Wu M, Liu Z: The deregulation of arachidonic acid metabolism-related genes in human esophageal squamous cell carcinoma. *Int J Cancer* 2003, **106**:327-333.
 20. Rimmelink M, Mijatovic T, Gustin A, Mathieu A, Rombaut K, Kiss R, Salmon I, Decaestecker C: Identification by means of cDNA microarray analyses of gene expression modifications in squamous non-small cell lung cancers as compared to normal bronchial epithelial tissue. *Int J Oncol* 2005, **26**:247-258.
 21. Domoto T, Miyama Y, Suzuki H, Teratani T, Arai K, Sugiyama T, Takayama T, Mugiya S, Ozono S, Nozawa R: Evaluation of S100A10, annexin II and B-FABP expression as markers for renal cell carcinoma. *Cancer Science* 2007, **98**:77-82.
 22. Kittaka N, Takemasa I, Takeda Y, Marubashi S, Nagano H, Umehita K, Dono K, Matsubara K, Matsuura N, Monden M: Molecular mapping of human hepatocellular carcinoma provides deeper biological insight from genomic data. *European Journal of Cancer* 2008, **44**:885-897.
 23. Sitek B, Sipos B, Alkatout I, Poschmann G, Stephan C, Schulenberg T, Marcus K, Luttgies J, Dittert DD, Baretton G, Schmiegel W, Hahn SA, Kloppel G, Meyer HE, Stuhler K: Analysis of the Pancreatic Tumor Progression by a Quantitative Proteomic Approach and Immunohistochemical Validation. *Journal of Proteome Research* 2009, **8**:1647-1656.
 24. MacLeod TJ, Kwon M, Filipenko NR, Waisman DM: Phospholipid-associated annexin A2-S100A10 heterotetramer and its subunits: characterization of the interaction with tissue plasminogen activator, plasminogen, and plasmin. *J Biol Chem* 2003, **278**:25577-25584.
 25. Zhang L, Fogg DK, Waisman DM: RNA Interference-mediated Silencing of the S100A10 Gene Attenuates Plasmin Generation and Invasiveness of Colo 222 Colorectal Cancer Cells. *J Biol Chem* 2004, **279**:2053-2062.
 26. Koopman M, Venderbosch S, van Tinteren H, Ligtenberg MJ, Nagtegaal I, Van Krieken JH, Punt CJ: Predictive and prognostic markers for the outcome of chemotherapy in advanced colorectal cancer, a retrospective analysis of the phase III randomised CAIRO study. *Eur J Cancer* 2009, **45**:1999-2006.
 27. Hsu SY, Kaipia A, Zhu L, Hsueh AJW: Interference of BAD (Bcl-xL/Bcl-2-Associated Death Promoter)-Induced Apoptosis in Mammalian Cells by 14-3-3 Isoforms and P11. *Mol Endocrinol* 1997, **11**:1858-1867.
 28. Masiakowski P, Shooter EM: Changes in PC12 cell morphology induced by transfection with 42C cDNA, coding for a member of the 5-100 protein family. *J Neurosci Res* 1990, **27**:264-269.
 29. Wu T, Angus CW, Yao XL, Logun C, Shelhamer JH: P11, a unique member of the S100 family of calcium-binding proteins, interacts with and inhibits the activity of the 85-kDa cytosolic phospholipase A2. *J Biol Chem* 1997, **272**:17145-17153.
 30. Castellone MD, Teramoto H, Williams BO, Druey KM, Gutkind JS: Prostaglandin E2 Promotes Colon Cancer Cell Growth Through a Gs-Axin-(beta)-Catenin Signaling Axis. *Science* 2005, **310**:1504-1510.
 31. Sheng H, Shao J, Washington MK, DuBois RN: Prostaglandin E2 Increases Growth and Motility of Colorectal Carcinoma Cells. *Journal of Biological Chemistry* 2001, **276**:18075-18081.
 32. Tutton PJ, Barkla DH: Influence of inhibitors of serotonin uptake on intestinal epithelium and colorectal carcinomas. *Br J Cancer* 1982, **46**:260-265.
 33. Xu W, Tamim H, Shapiro S, Stang MR, Collet J-P: Use of antidepressants and risk of colorectal cancer: a nested case-control study. *The Lancet Oncology* 2006, **7**:301-308.
 34. Li Q, Laumonier Y, Syrovets T, Simmet T: Plasmin Triggers Cytokine Induction in Human Monocyte-Derived Macrophages. *Arterioscler Thromb Vasc Biol* 2007, **27**:1383-1389.
 35. Schneider MR, Hoeflich A, Fischer JR, Wolf E, Sordat B, Lahm H: Interleukin-6 stimulates clonogenic growth of primary and metastatic human colon carcinoma cells. *Cancer Lett* 2000, **151**:31-38.
 36. Becker C, Fantini MC, Schramm C, Lehr HA, Wirtz S, Nikolaev A, Burg J, Strand S, Kiesslich R, Huber S, Ito H, Nishimoto N, Yoshizaki K, Kishimoto T, Galle PR, Blessing M, Rose-John S, Neurath MF: TGF-beta suppresses tumor progression in colon cancer by inhibition of IL-6 trans-signaling. *Immunity* 2004, **21**:491-501.
 37. Svenningsson P, Greengard P: p11 (S100A10) - an inducible adaptor protein that modulates neuronal functions. *Current Opinion in Pharmacology* 2007, **7**:27-32.
 38. Lavie Y, Fiucci G, Liscovitch M: Up-regulation of Caveolae and Caveolar Constituents in Multidrug-resistant Cancer Cells. *Journal of Biological Chemistry* 1998, **273**:32380-32383.
 39. Pang A, Au WY, Kwong YL: Caveolin-1 gene is coordinately regulated with the multidrug resistance 1 gene in normal and leukemic bone marrow. *Leukemia Research* 2004, **28**:973-977.
 40. Cavallo-Medved D, Mai J, Dosesu J, Sameni M, Sloane BF: Caveolin-1 mediates the expression and localization of cathepsin B, pro-urokinase plasminogen activator and their cell-surface receptors in human colorectal carcinoma cells. *J Cell Sci* 2005, **118**:1493-1503.
 41. Johnsson N, Marriott G, Weber K: p36, the major cytoplasmic substrate of src tyrosine protein kinase, binds to its p11 regulatory subunit via a short amino-terminal amphiphatic helix. *EMBO J* 1988, **7**:2435-2442.
 42. Kube E, Becker T, Weber K, Gerke V: Protein-protein interaction studied by site-directed mutagenesis. Characterization of the annexin II-binding site on p11, a member of the S100 protein family. *Journal of Biological Chemistry* 1992, **267**:14175-14182.
 43. Rety S, Sopkova J, Renouard M, Osterloh D, Gerke V, Tabaries S, Russo-Marie F, Lewit-Bentley A: The crystal structure of a complex of p11 with the annexin II N-terminal peptide. *Nat Struct Mol Biol* 1999, **6**:89-95.

44. Keutzer JC, Hirschhorn RR: **The growth-regulated gene 1B6 is identified as the heavy chain of calpactin I.** *Exp Cell Res* 1990, **188**:153-159.
45. Vishwanatha JK, Kumble S: **Involvement of annexin II in DNA replication: evidence from cell-free extracts of Xenopus eggs.** *J Cell Sci* 1993, **105**:533-540.
46. Chiang Y, Rizzino A, Sibenaller ZA, Wold MS, Vishwanatha JK: **Specific down-regulation of annexin II expression in human cells interferes with cell proliferation.** *Mol Cell Biochem* 1999, **199**:139-147.
47. Gerke V, Creutz CE, Moss SE: **Annexins: linking Ca²⁺ signalling to membrane dynamics.** *Nat Rev Mol Cell Biol* 2005, **6**:449-461.
48. Deora AB, Kreitzer G, Jacovina AT, Hajjar KA: **An Annexin 2 Phosphorylation Switch Mediates p11-dependent Translocation of Annexin 2 to the Cell Surface.** *J Biol Chem* 2004, **279**:43411-43418.
49. Tan Y, Ma SY, Wang FQ, Meng HP, Mei C, Liu A, Wu HR: **Proteomic-based analysis for identification of potential serum biomarkers in gallbladder cancer.** *Oncol Rep* 2011, **26**:853-859.
50. Farrah T, Deutsch EW, Omenn GS, Campbell DS, Sun Z, Bletz JA, Mallick P, Katz JE, Malmstrom J, Ossola R, Watts JD, Lin B, Zhang H, Moritz RL, Aebersold RH: **A high-confidence human plasma proteome reference set with estimated concentrations in PeptideAtlas.** *Mol Cell Proteomics* 2011.
51. Weinberger SR, Boschetti E, Santambien P, Brenac V: **Surface-enhanced laser desorption-ionization retentate chromatography(TM) mass spectrometry (SELDI-RC-MS): a new method for rapid development of process chromatography conditions.** *Journal of Chromatography B* 2002, **782**:307-316.

doi:10.1186/1477-5956-9-76

Cite this article as: Suzuki *et al.*: S100A10 protein expression is associated with oxaliplatin sensitivity in human colorectal cancer cells. *Proteome Science* 2011 **9**:76.

Submit your next manuscript to BioMed Central and take full advantage of:

- Convenient online submission
- Thorough peer review
- No space constraints or color figure charges
- Immediate publication on acceptance
- Inclusion in PubMed, CAS, Scopus and Google Scholar
- Research which is freely available for redistribution

Submit your manuscript at
www.biomedcentral.com/submit

