

Research

Open Access

***Trypanosoma cruzi* alkaline 2-DE: Optimization and application to comparative proteome analysis of flagellate life stages**

Adriana D Magalhães¹, Sébastien Charneau¹, Jaime Paba^{1,4},
Rafael AP Guércio¹, Antonio RL Teixeira², Jaime M Santana³,
Marcelo V Sousa¹ and Carlos AO Ricart*¹

Address: ¹Laboratory of Biochemistry and Protein Chemistry, Department of Cell Biology, University of Brasília, 70910-900, Brazil, ²Chagas Disease Multidisciplinary Research Laboratory, Faculty of Medicine, University of Brasília, 70910-900, Brazil, ³Laboratory of Parasite-host Interaction, Department of Cell Biology and Faculty of Medicine, University of Brasília, 70910-900, Brazil and ⁴Department of Biochemistry, Federal University of Paraná, Curitiba, Brazil

Email: Adriana D Magalhães - admagalhaes@unb.br; Sébastien Charneau - charneau@unb.br; Jaime Paba - jaimepaba@ufpr.br; Rafael AP Guércio - raffa@unb.br; Antonio RL Teixeira - ateixeir@unb.br; Jaime M Santana - jsantana@unb.br; Marcelo V Sousa - mvsousa@unb.br; Carlos AO Ricart* - ricart@unb.br

* Corresponding author

Published: 8 September 2008

Received: 9 May 2008

Proteome Science 2008, **6**:24 doi:10.1186/1477-5956-6-24

Accepted: 8 September 2008

This article is available from: <http://www.proteomesci.com/content/6/1/24>

© 2008 Magalhães et al; licensee BioMed Central Ltd.

This is an Open Access article distributed under the terms of the Creative Commons Attribution License (<http://creativecommons.org/licenses/by/2.0>), which permits unrestricted use, distribution, and reproduction in any medium, provided the original work is properly cited.

Abstract

Background: *Trypanosoma cruzi*, a flagellate protozoan, is the etiological agent of Chagas disease, a chronic illness that causes irreversible damage to heart and digestive tract in humans. Previous 2-DE analyses of *T. cruzi* proteome have not focused on basic proteins, possibly because of inherent difficulties for optimizing 2-DE in the alkaline pH range. However, *T. cruzi* wide pH range 2-DE gels have shown few visible spots in the alkaline region, indicating that the parasite either did not have an appreciable amount of alkaline proteins or that these proteins were underrepresented in the 2-DE gels.

Results: Different IEF conditions using 6–11 pH gradient strips were tested for separation of *T. cruzi* alkaline proteins. The optimized methodology described here was performed using anodic "paper bridge" sample loading supplemented by increased concentration of DTT and Triton X-100 on Multiphor II (GE Healthcare) equipment and an electrode pad embedded in DTT- containing solution near the cathode in order to avoid depletion of reducing agent during IEF. Landmark proteins were identified by peptide mass fingerprinting allowing the production of an epimastigote 2-DE map. Most identified proteins corresponded to metabolic enzymes, especially those related to amino acid metabolism. The optimized 2-DE protocol was applied in combination with the "two-in-one gel" method to verify the relative expression of the identified proteins between samples from epimastigote and trypomastigote life stages.

Conclusion: High resolution 2-DE gels of *T. cruzi* life forms were achieved using the optimized methodology and a partial epimastigote alkaline 2-DE map was built. Among 700 protein spots detected, 422 were alkaline with a pI above 7.0. The "two-in-one gel" method simplified the comparative analysis between *T. cruzi* life stages since it minimized variations in spot migration and silver-stained spot volumes. The comparative data were in agreement with biological traits of *T. cruzi* life forms and also corroborated previous *T. cruzi* proteomic studies. For instance, enzymes related to amino acid metabolism and dehydrogenases were more abundant in epimastigote 2-DE gel whilst *trans*-sialidase and a paraflagellar protein were found specifically in the trypomastigote 2-DE profile.

Background

Trypanosoma cruzi, a flagellate kinetoplastid protozoan, is the etiological agent of Chagas disease, a chronic illness that causes irreversible damage to heart and digestive tract in humans. Chagas disease remains as a serious problem in Latin America where approximately 17 million people are infected [1]. The drugs currently used for its chemoprophylactic treatment are highly toxic and present variable efficacy [2] whilst vaccines against the parasite are not available yet.

T. cruzi life cycle occurs inside both bloodsucking triatomine insect vectors and mammalian hosts. During its life cycle, the parasite differentiates into four stages: epimastigote and metacyclic trypomastigote in the insect vector, and bloodstream trypomastigote and amastigote inside the mammalian host. It has been assumed that the biological features of each trypanosome developmental stage were shaped by changes in protein expression during its life cycle. These features have led to proteomic analysis of the parasite using different strategies such as two-dimensional gel electrophoresis coupled to mass spectrometry (2-DE-MS) [3,4] and isotope coded affinity tagging (ICAT) [5] even before the *T. cruzi* genome sequence was published [6].

It appears that proteomic approaches have advantages over nucleic acid based strategies for the study of differential gene expression in trypanosomatids since their gene regulation is mostly post-transcriptional, through control of mRNA stability and translation efficiency. Consequently, there is not a good correlation between mRNA and protein levels [7,8].

More recently, the Multidimensional Protein Identification Technology (MUDPIT) was used to identify 2784 proteins from the four *T. cruzi* life forms. Although the *T. cruzi* genome sequence was available, several proteins were identified by cross-species homology and remain putative [9]. It was previously shown that the number of proteins identified by shotgun protein sequencing methods is higher than that usually achieved by 2-DE-MS based proteomics [10]. On the other hand, the use of 2-DE-MS approach appears to bear important advantages over high throughput proteomic strategies (such as MUDPIT) that hydrolyze the proteins into peptides before chromatographic separation and identification. Since 2-DE permits the separation and the visualization of intact polypeptides, it handles better situations dealing with quantitative and qualitative changes of modified proteins during the biological process time course [10] as reported for amastigogenesis [3] and metacyclogenesis [11] differentiation processes in *T. cruzi*.

Obviously, the collection of proteomic techniques presently available should be used in complementary way. Finally, it must be said that the *T. cruzi* proteome characterization is far from complete considering that the proteome is a very dynamic entity that will change in response to organism life stage or breed and environmental conditions.

So far, reports on 2-DE analysis of *T. cruzi* proteome have not focused on basic polypeptides, possibly because of inherent difficulties for optimizing 2-DE conditions in the alkaline pH range. Oddly, previous reports have shown that *T. cruzi* wide range pH (3–10) gradient gels displayed few spots in the alkaline region [3,4] indicating that the parasite either did not have an appreciable amount of alkaline proteins or that these proteins were underrepresented in the 2-DE gels.

In the present article we show an optimized and reproducible protocol for the 2-DE of *T. cruzi* proteins in the 6–11 pH range. Landmark proteins were identified by peptide mass fingerprinting allowing the production of an epimastigote 2-DE map. Additionally, the "two-in-one gel" technique [12] was applied to determine the relative expression of the identified proteins between epimastigote and trypomastigote life forms

Results and discussion

Optimization of *T. cruzi* alkaline 2-DE

T. cruzi proteome maps in the restricted alkaline pH range have not been reported yet. However, previous attempts to separate *T. cruzi* proteins using wide pH range (3–10) 2-DE gels produced profiles with few visible spots in the alkaline region besides severe horizontal streaking problems [3,4]. Those wide range 2-DE profiles indicated that the concentration of trypanosome basic proteins was lower than the acidic ones. However, it is very likely that the alkaline polypeptides comprise a group at least as numerous as the acidic set. It has been previously shown for several organisms that the theoretical distribution of protein *pI* in whole proteomes is usually bimodal with very low fractions of proteins close to pH 7.4 [13,14]. Virtual 2-DE gels (plot of the calculated *pI* values against the calculated molecular masses of the proteins) were built for proteomes of the protozoan parasites *Leishmania major* and *T. brucei*, that belong to the same family (Trypanosomatidae) and order (Kinetoplastidae) as *T. cruzi* and share similarities concerning subcellular and genome architecture [15]. Such virtual 2-DE gels displayed a relatively symmetric bimodal *pI* distribution between basic and acidic polypeptides [16]. Thus, it would be expected that similar virtual 2-DE spot distribution would occur with *T. cruzi*.

In the present work, we aimed at obtaining a *T. cruzi* high resolution alkaline 2-DE map. Difficulties in getting suitable alkaline 2-DE maps are due to a combination of factors including depletion of charged reducing agents such as DTT in the high pH range of the IPG strip and reverse electroendosmotic flow that occurs during IEF [17]. In order to minimize these effects, we tested different experimental conditions in the 6–11 pH range.

T. cruzi epimastigote life stage was used for optimization due to the relative facility to culture it in large scale. Using this parasite stage, we have observed that the intensity of spots in the alkaline region was visually lower than in the acid pH range. Therefore, we introduced the first relevant protocol modification by increasing the protein loading in the 6–11 IPG strip to twice the amount previously loaded in 4–7 pH range 2-DE gels [3]. We tested several

IEF methods using epimastigote protein extracts and the most representative of them are detailed in Table 1.

The assessed methods differed according to the type of IEF equipment, sample buffer composition, sample application method, voltage conditions and prevention of DTT depletion. In all protocols isopropanol (10% v/v) was used in the sample buffer to minimize electroendosmotic flow as previously described [18].

Method A made use of the IPGphor equipment (GE Healthcare) and followed the manufacturer's instructions for 6–11 pH range. IPGphor has advantages over Multiphor II (GE Healthcare), another equipment routinely used in our laboratory, since it permits a single application step for in-gel rehydration/focusing and allows shorter runs due to higher voltages. Previous studies have

Table 1: Methods tested for alkaline IEF of *T. cruzi* proteins

Method	Sample application ^a	Strip rehydration	Equipment	Cathodic DTT pad	IEF program		
					Voltage (V)	Time (h:min)	Volt-hours (Vh)
A	In-gel rehydration sample in 350 µL of SB1	12 h	IPGphor	no	50 µA/strip, all step-n-hold 500 1,000 8,000	1:00 1:00 4:00	500 1,000 32,000
B	In-gel rehydration sample in 350 µL of SB1	12 h	Multiphor II	65 mM DTT	2 mA and 5 W all step-n-hold 500 3,500	0:01 7:30	8 26,250
C	Anodic cup-loading sample in 100 µL of SB1	12 h in SB1 without sample	Multiphor II	65 mM DTT	2 mA and 5 W all gradient 300 1,400 3,500	3:00 16:00 5:00	450 11,200 8,750
D	Anodic cup-loading sample in 100 µL of SB2	12 h in SB2 without sample	Multiphor II	SB2	2 mA and 5 W all gradient 300 1,400 3,500	3:00 16:00 5:00	450 11,200 8,750
E	Paper-bridge loading sample in 250 µL of SB1	10 h in SB1 without sample	Multiphor II	SB1	2 mA and 5 W all step-n-hold 150 300 600 3,500	1:00 2:00 1:00 10:30	150 600 600 36,750
F	Paper-bridge loading sample in 250 µL of SB3	10 h in SB1 without sample	Multiphor II	SB1	2 mA and 5 W all step-n-hold 150 300 600 3,500	1:00 2:00 1:00 10:30	150 600 600 36,750

^a 500 µg protein was applied in 6–11 linear IPG strips, 18 cm, at 20°C

SB1 = 2-DE sample buffer 1 (7 M urea, 2 M thiourea, 0.5% IPG buffer 6–11, 65 mM DTT, 2% Triton X-100, 10% isopropanol and bromophenol blue)

SB2 = 2-DE sample buffer 2 (7 M urea, 2 M thiourea, 0.5% IPG buffer 6–11, 1.2% DeStreak, 2% Triton X-100 and bromophenol blue)

SB3 = 2-DE sample buffer 3 (7 M urea, 2 M thiourea, 0.5% IPG buffer 6–11, 85 mM DTT, 2.5% Triton X-100, 10% isopropanol and bromophenol blue)

also shown improved sample entry with the IPGphor, although there are conflicting reports about this matter in the literature [19].

Fig. 1A presents the 2-DE profile resolved by method A, showing few intense silver stained spots and mild horizontal streaking, specially in the high apparent molecular mass region.

Despite the above arguments, Multiphor II was also used to check whether the separation could be improved using a different IEF equipment. As mentioned, Multiphor II uses lower maximal voltages (3,500 V) than IPGphor (8,000 V) and consequently produces longer runs. As in method A, the sample loading in method B was done by in gel rehydration. The resulting 2-DE profile using method B presented in Fig. 1B showed a profile with much less intense spots and accentuated streaking in the more basic region.

Methods A and B used "in gel rehydration" for sample application, thus the IPG strip was directly rehydrated with a solution that contained the sample [20]. Although in gel rehydration has become the method of choice for sample application, it has been noticed that in some cases better results could be achieved by applying the sample on the surface of the IPG gel using sample cups ("cup loading") [21]. In addition, streaking problems in 2-DE gels were possibly caused by depletion of DTT in the basic region. This depletion can be prevented by the use of an electrode paper pad at the cathode as source of DTT during focusing [22]. Therefore, method C made use of sample-cup application near the anode and an electrode pad soaked in 2D sample buffer next to the cathode. In order to concentrate the sample proteins to a volume compatible to cup loading (100 μ L), the sample was previously precipitated with TCA/acetone prior to IEF. Although the resulting 2-DE profile (Fig. 1C) showed that cup-loading provided higher spot resolution comparing to in gel rehydration (Fig. 1B) it was still not suitable for the production of a satisfactory proteome map.

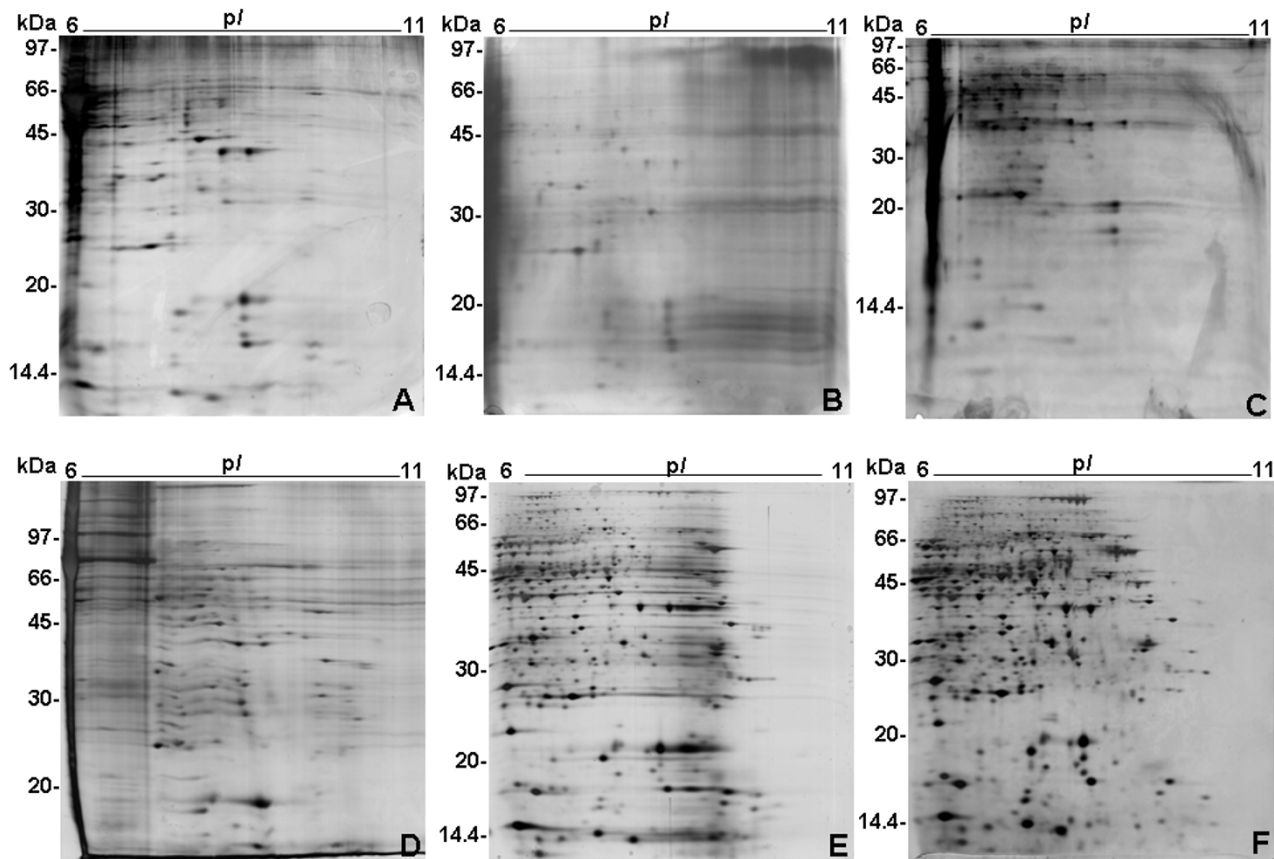


Figure 1

Optimization of epimastigote alkaline 2-DE profiles. The 2-DE were performed using 6–11 pH IPG strip in IEF and 12% T SDS-PAGE in the second dimension and silver stained. One representative gel is shown for each IEF method used. A, B, C, D, E and F refer to the IEF method used according to Table I. The sample amount was 500 μ g protein/gel.

In method D, hydroxyethyl disulfide (DeStreak, GE Healthcare) was added to sample buffer (SB2, Table 1) instead of DTT. DeStreak was previously shown to prevent streaking in alkaline regions by means of oxidation of protein thiol groups to mixed disulfides [23]. However, the presence of hydroxyethyl disulfide did not improve spot resolution in epimastigote alkaline 2-DE gels as shown in Fig. 1D.

Method E made use of "paper bridge loading" for sample application in IEF. Therefore, epimastigote proteins diluted in 250 μ L of SB1 (Table 1) were applied to an arrow head paper electrode strip and positioned at the anodic end of the IPG strip as previously described [24]. Since "paper bridge loading" permits the application of higher sample volumes than cup loading, protein concentration with TCA/acetone was not necessary prior to IEF. The combination of "paper bridge loading" with higher total voltage (see Table 1) resulted in an improved 2-DE profile with approximately 480 well resolved spots, although still displaying streaking particularly in the basic end (Fig. 1E) which made difficult the detection of the most alkaline proteins.

Sample buffer composition was then modified (SB3, Table 1) by increasing DTT and Triton X-100 concentrations in order to decrease protein oxidation and precipitation respectively (method F, Table 1). The resulting 2-DE gel (Fig. 1F) displayed high spot resolution as well as a reproducible profile. 2-DE gels were run in triplicate using method F and then subjected to computational image analysis which permitted the detection of 700 silver-stained spots from 6–11 pH range with 422 alkaline silver-stained proteins over pH 7.0 and thus the majority of spots (60.2%) are in the basic range.

Epimastigote 2-DE mapping

Landmark spots were chosen (Fig. 2) and subjected to trypsin digestion followed by peptide mass fingerprinting (PMF). The identified spots are listed in Table 2. Most of them corresponded to metabolic enzymes, especially those related to amino acid metabolism. A small GTP binding protein, cyclophilin A and heat shock proteins were also detected.

The statistical correlation between the theoretical and experimental Mr values (Pearson $r = 0.984$, $P < 0.001$) was higher than that of pI values (Pearson $r = 0.852$, $P < 0.001$) (see Additional file 1). The lower correlation between theoretical and experimental pI values is probably due to post-translational modifications (PTMs) [25,26]. Discrepancies between theoretical and experimental pI values were previously observed in the trypanosomatide *Leishmania major* and were shown to be caused by PTMs, specially acetylation, N-terminal pyroglutamyla-

tion, N-terminal processing of methionine, deamidation and oxidation of tryptophan [27]. Previous *T. cruzi* proteome analyses have reported the detection of protein isoforms in 2-DE gels, probably corresponding to different post-translational modifications [3,11].

Comparative analysis of epimastigote and trypomastigote 2-DE maps using "two-in-one gel"

Overall, we succeeded to produce a high resolution alkaline 2-DE map for the epimastigote life stage. Moreover, we applied the optimized method to other *T. cruzi* life stages resulting in well resolved and reproducible 2-DE profiles (data not shown).

The optimized alkaline 2-DE methodology was also applied to compare the relative expression of the identified proteins in samples from the insect non-invasive motile life stage, epimastigote and the mammalian invasive motile stage, trypomastigote. For that, we used the "two-in-one gel" technique described elsewhere [12]. This technique minimizes variations in spot migration and intensity when two samples are compared by 2-DE, because both samples run in the same second dimension SDS-PAGE gel and are simultaneously stained. These features are especially advantageous for the comparison of silver stained 2-DE gels. Although very sensitive, silver staining is not an endpoint procedure, *i.e.* spot intensity depends on developing time. The use of "two-in-one gel" technique minimized this drawback since both epimastigote and trypomastigote proteins were present in the same gel and were consequently subjected to the same staining conditions, including developing time.

Fig. 3 shows the comparative "two-in-one gel" between epimastigote and trypomastigote forms in two pH ranges. It was noticed that the majority of the spots were present in the more acidic half of the 6–11 IPG strip, corresponding to pH 6–8.5 (Fig. 3A). As expected, the "two-in-one gel" simplified the computational matching of spots between epimastigote and trypomastigote samples. Besides the spots previously identified from the epimastigote 2-DE map (Fig. 2), three additional spots detected only in trypomastigote were also identified by PMF (spots 30, 31 and 32). The relative expression of *T. cruzi* proteins was calculated using the epimastigote/trypomastigote spot volume ratio (E/T). To acquire more confidence in the E/T values, "two-in-one gel" experiments were carried out in triplicate and one-sample *t*-test was carried out to check if the E/T ratio of each spot was statistically different from 1 (Table 2). Prior to one-sample *t*-test, Shapiro-Wilk test [28] was applied to E/T ratio and confirmed that the samples came from a normally distributed population (see Additional file 2).

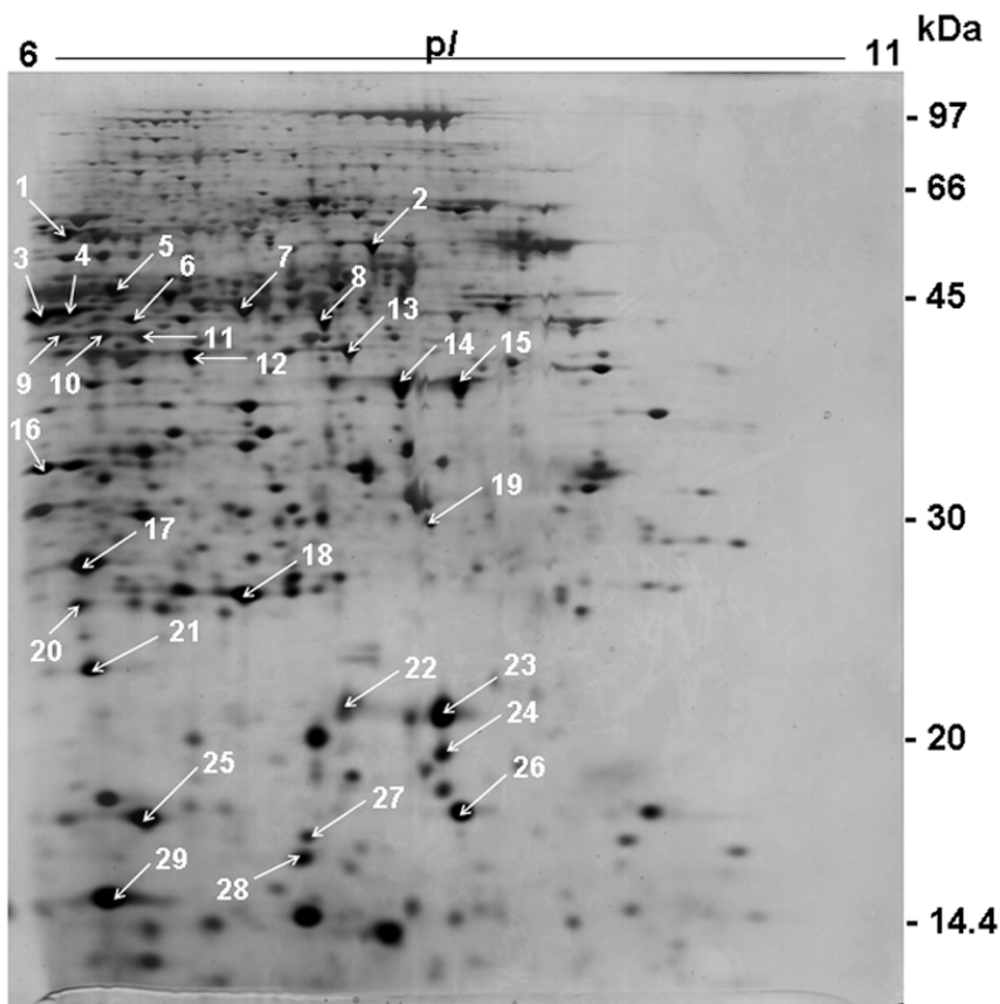


Figure 2

Epimastigote alkaline 2-DE map. 2-DE was carried out using method F (see Table 1). Spot numbers correspond to the proteins identified by PMF presented in Table 2.

The results presented in Table 2 show the relative expression (differential expression or stage specificity) of the identified spots in both *T. cruzi* stages. Among 29 landmark spots identified from epimastigote 2-DE map (Fig. 2), 7 spots (1, 3, 4, 20, 25, 27 and 28) were not detected in trypomastigote gels (Fig. 3). In addition, other 4 spots displayed statistically significant differential expression between both 2-DE profiles. Thus, spots 5 and 12 were more intense in epimastigote and spots 2 and 6 in trypomastigote. Moreover, 3 trypomastigote-specific proteins (spots 30, 31 and 32) were identified as mentioned above.

The Krebs cycle enzyme citrate synthase (spot 2) showed higher expression in trypomastigote than in epimastigote gels. On the other hand, enzymes from amino acid metabolism such as alanine aminotransferase (spot 1) and L-

threonine 3-dehydrogenase (spot 12) showed higher expression in epimastigote than in trypomastigote. These results are in agreement to what is known currently about *T. cruzi* energetic metabolism. Epimastigote form which lives in the insect gut obtain their energy from aminoacids such as L-proline and/or L-glutamine, the prominent constituent of insect hemolymph and tissue fluids [29]. Consequently, epimastigote relies on amino acid catabolism. On the other hand, the trypomastigote is present in the mammal host and uses glucose, which is abundant in host fluids, as carbon source [29].

Spots 3 and 4 were identified as *T. cruzi* dehydrogenases. These proteins are NAD(P)H flavin oxidoreductases that catalyze prostaglandin PGF₂ α synthesis in *T. cruzi* as well as reduction of some trypanocidal drugs. It was recently

Table 2: T. cruzi identified proteins and differential expression analysis among epimastigote and trypomastigote stages

Spot ^a	Protein	Accession No. (NCBI)	MASCOT		MW	pI	Expression	E/T (SEM) ^h	t-value ⁱ	Pi
			Seq. cov ^b (%)	Score ^c	Exp (Theo) ^d	Exp (Theo) ^d				
1	Alanine aminotransferase	gi 71660439	16	76	55.7 (55.1)	6.2 (6.1)	E ^e	-	-	-
2	Citrate synthase	gi 71660323	13	76	53.6 (53.1)	8.0 (8.6)	E<T ^g	0.35 ± 0.09	-7.144	0.019
3	Dehydrogenase	gi 61741948	35	116	43.5 (42.4)	6.0 (6.1)	E ^e	-	-	-
4	Dehydrogenase	gi 61741944	29	81	43.9 (42.6)	6.2 (6.0)	E ^e	-	-	-
5	D-isomer specific 2-hydroxyacid dehydrogenase	gi 71420052	32	82	46.1 (38.8)	6.4 (6.0)	E>T ^g	3.81 ± 0.10	27.755	0.001
6	Cystathionine beta-synthase	gi 71425069	30	81	43.2 (42.8)	6.6 (6.4)	E<T ^g	0.24 ± 0.03	-24.786	0.002
7	2-amino-3-ketobutyrate coenzyme A ligase	gi 71650629	29	87	44.3 (44.0)	7.2 (6.7)	E = T ^f	2.58 ± 0.55	2.897	0.101
8	Aspartate aminotransferase, mitochondrial	gi 71412236	22	87	43.3 (46.5)	7.7 (8.6)	E = T ^f	1.00 ± 0.21	0.015	0.989
9	Arginine kinase	gi 71407949	23	76	41.8 (40.5)	6.1 (6.3)	E = T ^f	0.84 ± 0.10	-1.544	0.262
10	D-isomer specific 2-hydroxyacid dehydrogenase	gi 71420052	47	140	42.0 (38.8)	6.4 (6.4)	E = T ^f	5.97 ± 2.45	2.027	0.180
11	D-isomer specific 2-hydroxyacid dehydrogenase	gi 71420052	42	99	41.9 (38.8)	6.6 (6.0)	E = T ^f	1.77 ± 0.39	1.962	0.189
12	L-threonine 3-dehydrogenase	gi 71406160	29	103	40.5 (37.3)	6.9 (6.7)	E>T ^g	9.64 ± 1.65	5.228	0.035
13	Succinyl-CoA synthetase alpha subunit	gi 71667777	29	81	40.9 (32.3)	7.8 (8.4)	E = T ^f	0.91 ± 0.05	-1.762	0.220
14	Mitochondrial malate dehydrogenase	gi 71414199	47	114	38.3 (31.9)	8.1 (7.6)	E = T ^f	1.27 ± 0.13	2.022	0.181
15	Mitochondrial malate dehydrogenase	gi 71414199	38	106	38.3 (31.9)	8.5 (7.6)	E = T ^f	1.43	-	-

Table 2: T. cruzi identified proteins and differential expression analysis among epimastigote and trypomastigote stages (Continued)

16	Pyridoxal kinase	gi 71413338	19	76	33.1 (33.6)	6.0 (6.0)	E = T ^f	4.10 ± 1.03	2.996	0.096
17	Tryparedoxin peroxidase	gi 17224953	44	101	27.8 (22.7)	6.3 (6.0)	E = T ^f	1.60 ± 0.51	1.173	0.361
18	Small GTP-binding protein	gi 71413249	30	76	26.2 (22.0)	7.2 (7.0)	E = T ^f	1.16 ± 0.34	0.479	0.679
19	Chain B, triosephosphate isomerase	gi 4389145	26	123	30.0 (27.4)	8.3 (8.6)	E = T ^f	0.64 ± 0.10	-3.543	0.071
20	Hypothetical protein	gi 71414910	51	111	25.6 (21.5)	6.3 (6.9)	E ^e	-	-	-
21	Peptide methionine sulfoxide reductase	gi 71405176	60	110	22.7 (20.2)	6.3 (6.1)	E = T ^f	4.10 ± 1.02	3.040	0.093
22	Cyclophilin A	gi 71659715	34	85	21.1 (19.0)	7.8 (8.4)	E = T ^f	3.20 ± 1.52	1.448	0.285
23	Cyclophilin A	gi 71659715	37	82	20.8 (19.0)	8.4 (8.4)	E = T ^f	1.28 ± 0.28	0.994	0.425
24	Cyclophilin A	gi 71659715	41	80	19.3 (19.0)	8.6 (8.4)	E = T ^f	1.28 ± 0.26	1.071	0.396
25	Calpain-like cystein peptidase	gi 71407848	51	97	17.1 (15.1)	6.6 (6.4)	E ^e	-	-	-
26	Nucleoside diphosphate kinase	gi 71667532	54	94	17.3 (17.0)	8.5 (8.5)	E = T ^d	3.75 ± 2.04	1.346	0.311
27	20 kDa heat shock protein	gi 71418782	42	78	16.6 (16.0)	7.8 (7.8)	E ^e	-	-	-
28	Hypothetical protein	gi 71407758	52	104	16.0 (13.0)	7.7 (7.8)	E ^e	-	-	-
29	10 kDa heat shock protein	gi 71410853	49	78	14.8 (10.7)	6.4 (8.0)	E = T ^f	1.67 ± 0.39	1.729	0.334
30	69 kDa Paraflagellar rod protein	gi 71650963	16	80	71.0 (70.1)	6.0 (5.9)	T ^e	-	-	-
31	Trans-sialidase	gi 71409133	11	88	75.0 (81.4)	7.0 (8.4)	T ^e	-	-	-
32	Hypothetical protein	gi 71651158	47	87	13.1 (16.4)	9.6 (9.0)	T ^e	-	-	-

^aSpot numbers correspond to those indicated in Fig. 2 and Fig. 3

^bPercentage of predicted protein sequence covered by matched peptides via Mascot

^cProbability Based Mowse Score of Mascot software

^dTheoretical Mr and pI calculated from amino acid sequence

^eSpots specifically detected in epimastigote (E) or trypomastigote (T)

^fProtein expression not statistically different between both life stages by t-test (p < 0.05)

^gStatistically significant (t-test, p < 0.05) increased spot volume in epimastigote (E>T) and trypomastigote (E<T)

^hEpimastigote/trypomastigote (E/T) spot volume ratio with standard error of the mean (SEM)

ⁱDecision value of the t-test

^jProbability value that E/T ratio is different from 1 in a random event

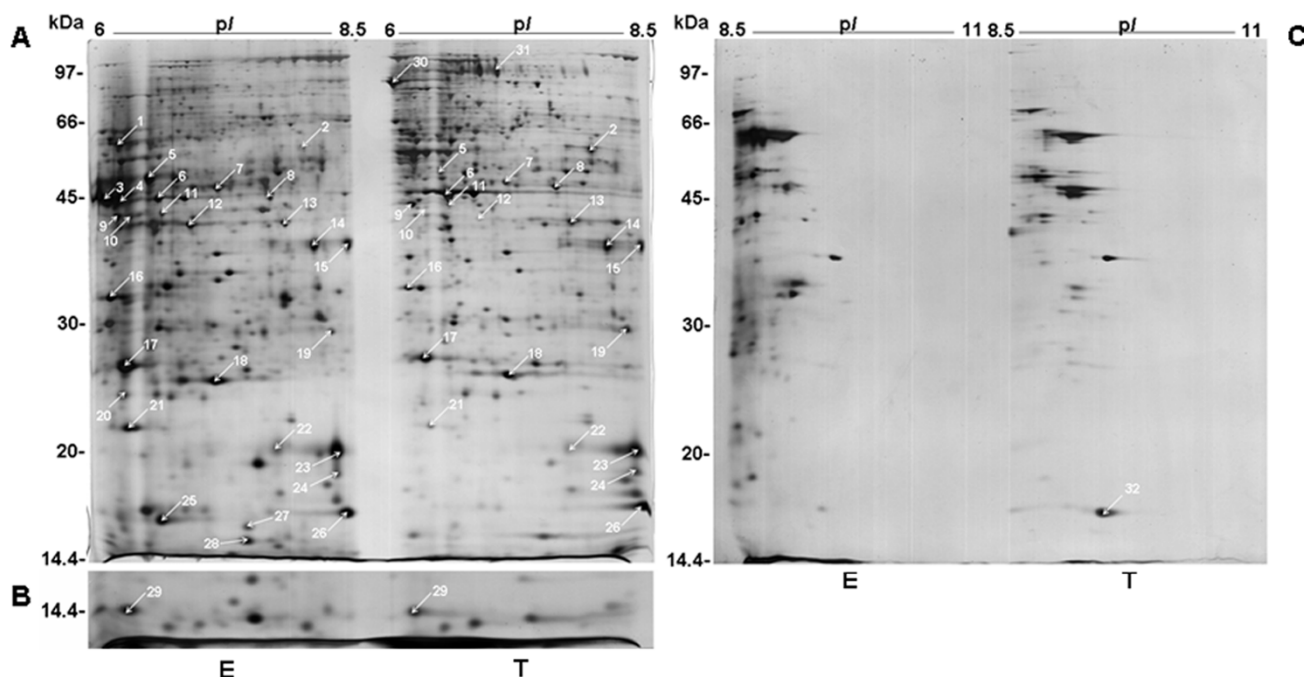


Figure 3

2-DE comparison between *T. cruzi* motile life forms using alkaline "two-in-one gel". IPG strips with epimastigote (E) and trypomastigote (T) samples were applied side-by-side on 12% T SDS-PAGE (see Material and Methods). A: "two-in-one gel" of 6–8.5 pH range. Spot 29 is shown in an inset (B) of a separate experiment. C: "two-in-one gel" of 8.5–11 pH range. Gels were silver stained.

shown for epimastigote that wild type *T. cruzi* displayed higher transcription level of this gene than parasite isolates with *in vitro* induced resistance to benznidazole, a drug used in the treatment of Chagas disease [30]. In our 2-DE experiments, NAD(P)H flavin oxidoreductases were present in epimastigote but not in trypomastigote, that confirms previous results using MUDPIT technology [9].

Although both epimastigote and trypomastigote are flagellate, the 69 kDa paraflagellar rod protein, a component of *T. cruzi* flagellum, was detected only in the latter (spot 30). In fact, this spot was found in the acid end of the trypomastigote 6–11 2-DE gel. It would be feasible that isoforms of this protein could be found in epimastigote but in a more acid pH range. However, pH 4–7 pH 2-DE gels of epimastigote showed the absence of matching spots (data not shown) in the corresponding region where paraflagellar proteins were detected in trypomastigote 4–7 pH 2-DE gels [3]. The stage specificity of the 69 kDa paraflagellar rod protein verified here may indicate differences in the molecular composition between both *T. cruzi* life forms.

A calpain-like protein (spot 25) was detected in epimastigote but not in trypomastigote. Calpains and calpain-

like proteins comprise a large family of genes in kinetoplastids. More than 20 gene sequences were found in *T. cruzi* genome [31]. Accordingly, some members of this family were previously shown to have higher expression in epimastigote than in trypomastigote [9].

Spot 31, detected in trypomastigote but not in epimastigote 2-DE gel, is a member of the *trans*-sialidase family. The *trans*-sialidases are cell surface proteins responsible for the incorporation of sialic acid from host cells into molecules present in the parasite membrane and play a role in immune evasion and host cell entry mechanisms [32]. The previous demonstration by MUDPIT analysis that *trans*-sialidases are largely expressed in trypomastigote and absent in epimastigote [9] validates the comparative approach used here.

Conclusion

Here we described the optimization of *T. cruzi* 2-DE in the alkaline pH range. The optimized protocol basically consisted on the use of anodic "paper bridge" sample loading on Multiphor II (GE Healthcare), the use of a DTT solution embedded electrode pad near the cathode and increased concentrations of DTT and Triton X-100 in the sample buffer. The resulting epimastigote 2-DE gel per-

mitted the visualization of approximately 700 spots in the 6–11 pH range and over 400 spots above pI 7.0.

The "two-in-one gel" method, herein used for the comparison of epimastigote and trypomastigote 2-DE gels, minimized variations in spot migration that facilitate computational image analysis and also reduced spot volume variance that is mostly due to the 2-DE second dimension and gel staining as recently demonstrated [33].

Preliminary comparative analysis of epimastigote and trypomastigote 2-DE maps revealed differences in protein expression that are in agreement with their biological traits and also corroborated previous *T. cruzi* proteomic studies. Additional experiments using immunological approaches may be used to confirm the differential expression of the proteins identified here as well as to determine their subcellular localization.

We expect that the approach used here can be applied in future to investigate the alkaline proteome of other *T. cruzi* stages or isolates as well as in time course studies of differentiation processes such as amastigogenesis and metacyclogenesis. It is also feasible to use the protocol to the study of alkaline proteomes from other trypanosomatids such as *T. brucei* and *Leishmania spp.*

Methods

In vitro *T. cruzi* culture

T. cruzi Berenice stock epimastigotes were grown at 28 °C in liver infusion tryptose (LIT) medium supplemented with 7.5% inactivated fetal bovine serum -FBS (Soral Biotechnology, Campo Grande, Brazil) [3]. Trypomastigotes were maintained in monolayer culture of murine L6 cells grown in DMEM medium supplemented with 7.5% (v/v) inactivated FBS, at 37 °C, under 5% CO₂ [3].

Protein solubilization

Epimastigote and trypomastigote cells were harvested by centrifugation (3,400 × g, 10 min, 4 °C) and washed three times in Tris-Buffered Saline (TBS, pH 7.4). For each pellet of 1 × 10⁹ cells, 100 μL of 0.2% SDS were added. The sample was boiled for 5 min and then chilled in ice for 1 min in order to break cells and inactivate proteases [3]. A volume of 100 μL of solubilization buffer (7.77 M urea, 2.22 M thiourea, 65 mM DTT, 2% Triton X-100) supplemented with Complete Mini Protease Inhibitor cocktail (Roche, Mannheim, Germany) was added to the lysate and immediately stored at -20 °C. To minimize sample variability, for each parasitic form, protein extracts from five separate growths were mixed together resulting in a pooled protein sample that was used in further 2-DE analysis. The sample volume was completed with solubilization buffer to obtain a concentration of 1.0 × 10⁸ cells/ 100 μL. Both epimastigote and trypomastigote pooled samples were incu-

bated under agitation for 1 h and centrifuged (12,000 × g, 15 min, 4 °C), and the supernatants were stored at -20 °C. Protein concentrations were quantified using the Plus One 2D Quant Kit (GE Healthcare, Uppsala, Sweden) according to manufacturer's instructions.

Two dimensional gel electrophoresis (2-DE)

Several alkaline IEF conditions were tested including equipment, sample buffer, sample application, running parameters and use of electrode paper pad embedded in 2-DE sample buffer as shown in Table 1. In all methods, samples were applied to 18 cm IPG strips with a linear separation range of pH 6–11 (GE Healthcare). Prior to 2-DE, extracts containing 500 μg of protein were diluted in the appropriate final volume of 2-DE sample buffer (SB1, SB2 or SB3, see Table 1), and incubated under agitation for 1 h and centrifuged at 12,000 × g, 10 min at room temperature.

Following IEF, the IPG strips were equilibrated for 40 min in a reducing solution (6 M urea, 30% (v/v) glycerol, 2% (w/v) SDS and 125 mM DTT) and for additional 40 min in a alkylating solution (6 M urea, 30% (v/v) glycerol, 2% (w/v) SDS and 300 mM acrylamide) [34]. Before second dimension, the IPG strips were briefly rinsed with SDS-PAGE running buffer (25 mM Tris, 192 mM glycine, 0.1% (w/v) SDS). SDS-PAGE was performed on 12% T polyacrylamide gels run on a Protean II system (Bio-Rad, Hercules, CA, USA) at 20 °C. Proteins were visualized by silver staining as described elsewhere [35] and the gels were stored in 1% acetic acid before protein digestion.

To compare the epimastigote and trypomastigote alkaline 2-DE maps, "two-in-one gel" analysis was carried out as previously described [12]. Briefly, equal amounts of both samples were focused on separate IPG strips using the optimized method F (Table 1). The IPG strips were cut in the middle resulting in two halves corresponding to pH range 6–8.5 and 8.5–11 respectively. The strips bearing the same pH range were loaded side-by-side on top of a vertical SDS-PAGE gel for molecular mass separation. The "two-in-one" gels were then silver stained and stored in 1% acetic acid.

Image analysis

Silver stained gels were scanned (PowerLook 1120, Amersham Biosciences) at 300 dpi resolution and the digitalized images were analyzed with Image Master Platinum software 5.0 (GE Healthcare) for spot detection, quantification and matching.

Statistical analysis

Spot volume ratios between matched spots from epimastigote and trypomastigote samples (E/T) were calculated from "two-in-one" gels in triplicate. Thus, if an E/T ratio

value for a given spot was equal to 1, it indicated that the protein was equally expressed in both life stages. The E/T ratio varied from 0 to 1 when trypomastigote value was higher, and between 1 to 8 when epimastigote value was higher.

Prior to one-sample t-test, Shapiro-Wilk test [28] was applied to E/T ratio to test the null hypothesis that the samples came from a normally distributed population. One-sample t-test was carried out using SPSS® 13 for Windows® to determine if the mean E/T ratio of each spot was statistically different from 1 (test value = 1), or in other words, if any spot had a statistically significant differential expression ($p < 0.05$) between the two trypanosome forms.

Peptide mass fingerprinting

Silver stained spots were excised, destained, in-gel digested with trypsin (Promega, Madison, USA) and extracted as previously described [3]. Briefly, the resulting peptide mixtures were analyzed in a MALDI-TOF mass spectrometer (Reflex IV, Bruker Daltonics, Karlsruhe, Germany). Each sample was concentrated and desalted with ZipTip C₁₈ (Millipore, MA, USA), and eluted directly with matrix solution (20 mg/ml α -cyano-4-hydroxycinnamic acid in 0.1% TFA, 50% acetonitrile) onto the target plate prior to MALDI-TOF MS analysis as previously described [3]. Mass spectra were performed using X-TOF and Biotoools software (Bruker Daltonics). Protein identification was performed using Mascot software <http://www.matrixscience.com>. The searches were performed against NCBI non redundant database with 0.2 Da mass tolerance and protein mass restriction according to the observed for each spot in the gel. The search parameters were restricted to eukaryotes and allowed one missed cleavage, propionamidation of cysteine and oxidation of methionine (variable modification).

List of abbreviations

2-DE: two-dimensional gel electrophoresis; IEF: isoelectric focusing; MS: mass spectrometry; DTT: dithiotreitol; IPG: immobilized pH gradient; TCA: trichloroacetic acid; PMF: peptide mass fingerprinting; TBS: Tris-Buffered Saline; SB: 2-DE sample buffer.

Competing interests

The authors declare that they have no competing interests.

Authors' contributions

ADM optimized alkaline 2-DE, image analysis, "two-in one gel" and protein identification by PMF. SC performed "two-in one gel", protein identification by PMF and participated in the writing of the manuscript. JP optimized alkaline 2-DE and participated in the writing of the manuscript. RAPG performed image analysis and protein iden-

tification by PMF. ARLT participated of *T. cruzi* cell culture and revised the final version of the manuscript. JMS participated of *T. cruzi* differentiation experiments and writing of the manuscript. MVS participated of data analysis and preparation of the manuscript. CAOR was responsible for experimental design, data analysis, coordination and preparation of the final version of the manuscript. All authors read and approved the final manuscript.

Additional material

Additional file 1

Correlation between experimentally determined and theoretical Mr (A) and pI (B) values of identified protein spots from *T. cruzi* 2-DE gels. The correlation values were: Pearson $r = 0.984$, $P < 0.001$ for Mr and pI Pearson $r = 0.852$, $P < 0.001$ for pI values.

Click here for file

[<http://www.biomedcentral.com/content/supplementary/1477-5956-6-24-S1.doc>]

Additional file 2

In order to test if the E/T values were normally distributed we applied the Shapiro-Wilk test. If $p > 0.05$ the hypothesis of the non-normality of the sample distribution can be rejected. Spots that are not shown in the table below appear only in one parasite life form. The results showed that all samples presented normal distribution and could be analyzed by the Student's t-data.

Click here for file

[<http://www.biomedcentral.com/content/supplementary/1477-5956-6-24-S2.doc>]

Acknowledgements

We wish to thank Carlos E. Uribe Valencia for statistical analyses and Nuno M. Domingues and Rayner M. L. Queiroz for technical assistance. This investigation received financial support from the UNICEF/UNDP/World Bank/WHO Special Program for Research and Training in Tropical Diseases, from FINEP-Financiadora de Estudos e Projetos, Brazil, Fundação de Apoio à Pesquisa do Distrito Federal (FAPDF), Brazil and from Conselho Nacional de Desenvolvimento Científico e Tecnológico (CNPq), Brazil. A. D. Magalhães, Dr. S. Charneau and R. A. P. Guércio received fellowships from CNPq, Brazil.

References

1. Moncayo A: **Chagas disease: current epidemiological trends after the interruption of vectorial and transfusional transmission in the Southern Cone countries.** *Mem Inst Oswaldo Cruz* 2003, **98**:577-591.
2. Urbina JA, Docampo R: **Specific chemotherapy of Chagas disease: controversies and advances.** *Trends Parasitol* 2003, **19**:495-501.
3. Paba J, Santana JM, Teixeira ARL, Fontes W, Sousa MV, Ricart CAO: **Proteomic analysis of the human pathogen Trypanosoma cruzi.** *Proteomics* 2004, **4**:1052-1059.
4. Parodi-Talice A, Duran R, Arrambide N, Prieto V, Pineyro MD, Pritsch O, Cayota A, Cervenansky C, Robello C: **Proteome analysis of the causative agent of Chagas disease: Trypanosoma cruzi.** *Int J Parasitol* 2004, **34**:881-886.
5. Paba J, Ricart CAO, Fontes W, Santana JM, Teixeira ARL, Marchese J, Williamson B, Hunt T, Karger BL, Sousa MV: **Proteomic analysis of Trypanosoma cruzi developmental stages using isotope-coded affinity tag reagents.** *J Proteome Res* 2004, **3**:517-524.

6. El-Sayed NM, Myler PJ, Bartholomeu DC, Nilsson D, Aggarwal G, Tran AN, Ghedin E, Worthey EA, Delcher AL, Blandin G, et al.: **The genome sequence of Trypanosoma cruzi, etiologic agent of Chagas disease.** *Science* 2005, **309**:409-415.
7. Clayton CE: **Life without transcriptional control? From fly to man and back again.** *EMBO J* 2002, **21**:1881-1888.
8. Vanhamme L, Pays E: **Control of gene expression in trypanosomes.** *Microbiol Rev* 1995, **59**:223-240.
9. Atwood JA 3rd, Weatherly DB, Minning TA, Bundy B, Cavola C, Oppendoes FR, Orlando R, Tarleton RL: **The Trypanosoma cruzi proteome.** *Science* 2005, **309**:473-476.
10. Rabilloud T: **Two-dimensional gel electrophoresis in proteomics: old, old fashioned, but it still climbs up the mountains.** *Proteomics* 2002, **2**:3-10.
11. Parodi-Talice A, Monteiro-Goes V, Arrambide N, Avila AR, Duran R, Correa A, Dallagiovanna B, Cayota A, Krieger M, Goldenberg S, Robello C: **Proteomic analysis of metacyclic trypomastigotes undergoing Trypanosoma cruzi metacyclogenesis.** *J Mass Spectrom* 2007, **42**:1422-1432.
12. Wang YY, Cheung PY, Wong MS, Lo SC: **"Two-in-one" gel for spot matching after two-dimensional electrophoresis.** *Proteomics* 2003, **3**:580-583.
13. Weiller GF, Caraux G, Sylvester N: **The modal distribution of protein isoelectric points reflects amino acid properties rather than sequence evolution.** *Proteomics* 2004, **4**:943-949.
14. Medjahed D, Smythers GV, Powell DA, Stephens RM, Lemkin PF, Munroe DJ: **VIRTUAL2D: A web-accessible predictive database for proteomics analysis.** *Proteomics* 2003, **3**:129-138.
15. El-Sayed NM, Myler PJ, Blandin G, Berriman M, Crabtree J, Aggarwal G, Caler E, Renauld H, Worthey EA, Hertz-Fowler C, et al.: **Comparative genomics of trypanosomatid parasitic protozoa.** *Science* 2005, **309**:404-409.
16. Kiraga J, Mackiewicz P, Mackiewicz D, Kowalczyk M, Biecek P, Polak N, Smolarczyk K, Dudek MR, Cebrat S: **The relationships between the isoelectric point and: length of proteins, taxonomy and ecology of organisms.** *BMC Genomics* 2007, **8**:163.
17. Hoving S, Gerrits B, Voshol H, Muller D, Roberts RC, van Oostrum J: **Preparative two-dimensional gel electrophoresis at alkaline pH using narrow range immobilized pH gradients.** *Proteomics* 2002, **2**:127-134.
18. Hoving S, Voshol H, van Oostrum J: **Towards high performance two-dimensional gel electrophoresis using ultrazoom gels.** *Electrophoresis* 2000, **21**:2617-2621.
19. Craven RA, Jackson DH, Selby PJ, Banks RE: **Increased protein entry together with improved focussing using a combined IPGphor/MultiPhor approach.** *Proteomics* 2002, **2**:1061-1063.
20. Sanchez JC, Rouge V, Pisteur M, Ravier F, Tonella L, Moosmayer M, Wilkins MR, Hochstrasser DF: **Improved and simplified in-gel sample application using reswelling of dry immobilized pH gradients.** *Electrophoresis* 1997, **18**:324-327.
21. Gorg A, Obermaier C, Boguth G, Weiss W: **Recent developments in two-dimensional gel electrophoresis with immobilized pH gradients: wide pH gradients up to pH 12, longer separation distances and simplified procedures.** *Electrophoresis* 1999, **20**:712-717.
22. Gorg A, Boguth G, Obermaier C, Posch A, Weiss W: **Two-dimensional polyacrylamide gel electrophoresis with immobilized pH gradients in the first dimension (IPG-Dalt): the state of the art and the controversy of vertical versus horizontal systems.** *Electrophoresis* 1995, **16**:1079-1086.
23. Olsson I, Larsson K, Palmgren R, Bjellqvist B: **Organic disulfides as a means to generate streak-free two-dimensional maps with narrow range basic immobilized pH gradient strips as first dimension.** *Proteomics* 2002, **2**:1630-1632.
24. Sabounchi-Schutt F, Astrom J, Olsson I, Eklund A, Grunewald J, Bjellqvist B: **An immobilized DryStrip application method enabling high-capacity two-dimensional gel electrophoresis.** *Electrophoresis* 2000, **21**:3649-3656.
25. Halligan BD, Ruotti V, Jin W, Laffoon S, Twigger SN, Dratz EA: **ProMoST (Protein Modification Screening Tool): a web-based tool for mapping protein modifications on two-dimensional gels.** *Nucleic Acids Res* 2004, **32**:W638-644.
26. Charneau S, Junqueira M, Costa CM, Pires DL, Bussacos AC, Sousa MV, Ricart CAO, Shevchenko A, Teixeira ARL: **The saliva proteome of the blood-feeding insect Triatoma infestans is rich in platelet-aggregation inhibitors.** *Int J Mass Spectrom* 2007, **268**:265-276.
27. Cuervo P, de Jesus JB, Junqueira M, Mendonca-Lima L, Gonzalez LJ, Betancourt L, Grimaldi G Jr, Domont GB, Fernandes O, Cupolillo E: **Proteome analysis of Leishmania (Viannia) braziliensis by two-dimensional gel electrophoresis and mass spectrometry.** *Mol Biochem Parasitol* 2007, **154**:6-21.
28. Shapiro SS, Wilk MB: **An analysis of variance test for normality (complete samples).** *Biometrika* 1965, **52**:591-611.
29. Bringaud F, Riviere L, Coustou V: **Energy metabolism of trypanosomatids: adaptation to available carbon sources.** *Mol Biochem Parasitol* 2006, **149**:1-9.
30. Murta SM, Krieger MA, Montenegro LR, Campos FF, Probst CM, Avila AR, Muto NH, de Oliveira RC, Nunes LR, Nirde P, et al.: **Deletion of copies of the gene encoding old yellow enzyme (TcOYE), a NAD(P)H flavin oxidoreductase, associates with in vitro-induced benznidazole resistance in Trypanosoma cruzi.** *Mol Biochem Parasitol* 2006, **146**:151-162.
31. Ersfeld K, Barraclough H, Gull K: **Evolutionary relationships and protein domain architecture in an expanded calpain superfamily in kinetoplastid parasites.** *J Mol Evol* 2005, **61**:742-757.
32. Frasch AC: **Functional diversity in the trans-sialidase and mucin families in Trypanosoma cruzi.** *Parasitol Today* 2000, **16**:282-286.
33. Valcu CM, Valcu M: **Reproducibility of two-dimensional gel electrophoresis at different replication levels.** *J Proteome Res* 2007, **6**:4677-4683.
34. Mineki R, Taka H, Fujimura T, Kikkawa M, Shindo N, Murayama K: **In situ alkylation with acrylamide for identification of cysteinyl residues in proteins during one- and two-dimensional sodium dodecyl sulphate-polyacrylamide gel electrophoresis.** *Proteomics* 2002, **2**:1672-1681.
35. Blum H, Beier H, Gross HJ: **Improved silver staining of plant-proteins, RNA and DNA in polyacrylamide gels.** *Electrophoresis* 1987, **8**:93-99.

Publish with **BioMed Central** and every scientist can read your work free of charge

"BioMed Central will be the most significant development for disseminating the results of biomedical research in our lifetime."

Sir Paul Nurse, Cancer Research UK

Your research papers will be:

- available free of charge to the entire biomedical community
- peer reviewed and published immediately upon acceptance
- cited in PubMed and archived on PubMed Central
- yours — you keep the copyright

Submit your manuscript here:
http://www.biomedcentral.com/info/publishing_adv.asp

